

:

Cynthia B. Lloyd .
Sahar El Tawila
Wesley H. Clark .
Barbara S. Mensch .

2001 No. 150

:

Cynthia B. Lloyd .
Sahar El Tawila
Wesley H. Clark .
Barbara S. Mensch .

Cynthia B. Lloyd .
Wesley H. Clark .
Barbara S. Mensch .
Sahar El Tawila .

Lockheed and :)
Verspoor 1991; Velez et al. 1993; Harbison and Hanushek 1992; Fuller
(and Clarke 1994; Glewwe 1999

.(Mincer 1974 :)

proxy
(.(Leibowitz 1974 :)
)

/ :
Mincer 1974;)
Grogger and Eide 1995;)

(Psacharopoulos 1989
(Murnane et al. 1995

(Behrman and Birdsall 1983)

23 (Bett 1996)

:

Bett

"

.()

.(183 .) "

-
- (Card and Krueger 1992)

"

(

.(123 .) "

.(Lloyd and Mensch 1999)

Lloyd et)

(Glewwe and Jacoby 1994)

:
(al. 2000

)
Harbison and Hanushek :

(1992; Hanushek and Lavy 1994
(Schultz 1987 :

(2 (" ")

(1 :

(3 i

.(1)

:)

.(

()

() (:)

.
:
.
:
:()
.

/ .
:
.
:()
.

.() /()

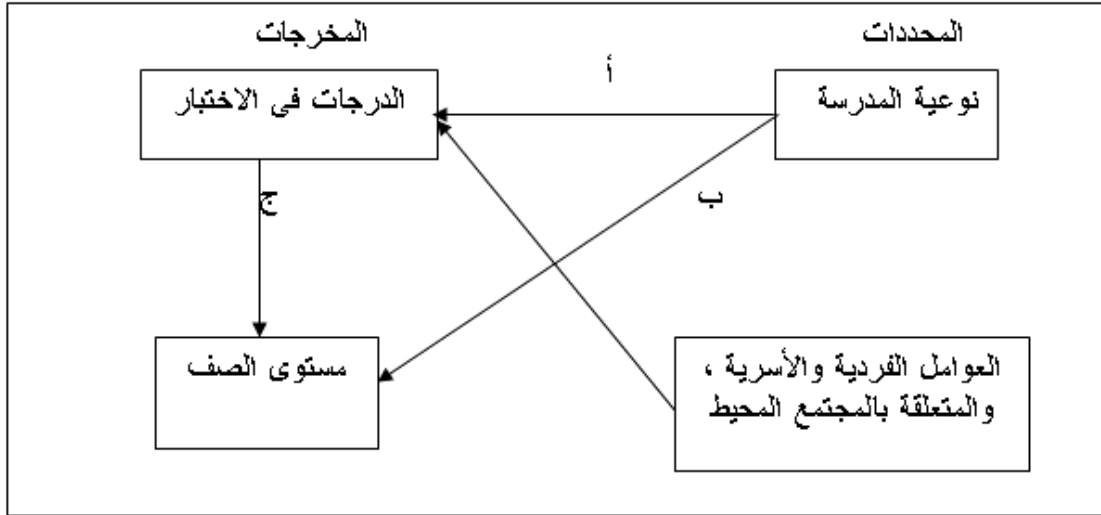
.
:
:() / :
.
/

. /

()

.()

الشكل البياني ١ نوعية المدرسة والمخرجات التعليمية



()
(Card and Krueger 1996 :)
:

(Lloyd et al. 2000)

()

() : ()
1984

(World Bank 1989)
:

()
%88 . %7
%4 %1

ii

.(Mahrouse 1994)
%50

) ()
.(

iii

.(World Bank 1989)

.(Assaad 1999)

- - 1964

1995

1983

.(Assaad 1997a) 1982

:

- . -
.
.

.(Assaad 1997b, 1999)

19 10
(%84)

%95)

.iv(

.

.

.

.

.(2)

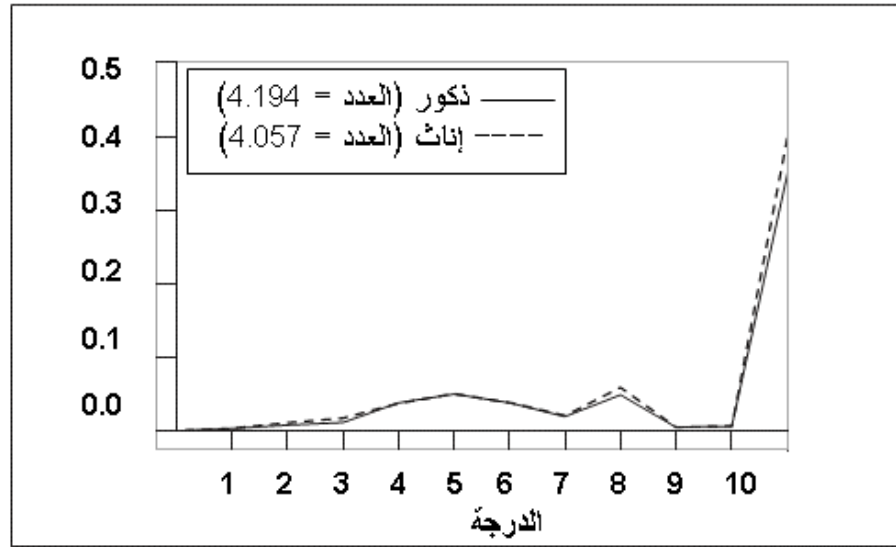
.()

.

.

:2

الشكل البياني ٢: معدلات الخطر للتسرب من التعليم في صفوف المراهقين الذين سبق لهم الالتحاق بالتعليم، على أساس الصف والجنس.



:

1997

()

- "

"

-

.1998

10

9.128

1997

. 19-

v

-

.

-

-

(

:

)

75

101

-

-

.

37

-

-

vi

(Mensch and Lloyd 1998; Lloyd et al. 2000)

75

(6)

1999/1998

vii

(

)

2

/

viii

ix

/

/

.(37 52 1.872)
%83 (1.562)

22 15
%83

)
%77
(El Tawila et al. 1999

53 - - .
)
(
- -)
(

/)
xiii(
19 3

3 .1
47 3

51

/ %81
%47

-

-

(%5 %22) .(%11 %29)
 %32 %43) .(
 3

(51 =)		(47 =)		
47.0	32.0	47.0	32.0	(%)
21.7	48.9	20.7	46.4	12 %
39.1	31.7	27.9	31.4	(%)
0.25	0.27	0.25	0.28	
3.4	16.7	3.6	17.3	(/)
2.7	8.6	3.1	8.9	()
20.4	53.6	19.9	50.8	(%)
21.1	84.8	13.6	87.7	(%)
23.7	34.1	22.3	39.4	(%)
35.1	80.7	28.8	47.0	(%) /
10.1	80.3	8.5	83.8	
7.8	43.7	8.4	43.3	
8.2	4.6	17.9	22.4	(%)
9.5	11.0	19.1	28.7	(%)
19.6	40.7	20.9	40.0	(%)
18.9	32.0	21.2	43.0	(%)
0.35	0.39-	0.41	0.05-) (1- = 1 =
0.35	0.22	0.37	0.23	1 =) (1- =
16.2	28.2	18.9	26.9	/

				" "	%)	
				(6

.

.

.

.

12
 xiv 25-67 %46
 - 44 43 -
 .%19 %61 %40
 .3
 6.5
 .(27-71)
 .0.02-0.53 %49
 0.27
 35 52

time hazard

.

.

.

.

.

Glewwe and Jacoby 1994; Glewwe et al. 1995)

endogeneity

(1 :

.(

(2

(3

.

1995

30

%9

.() .

.(Hussein 1988)

%3 "

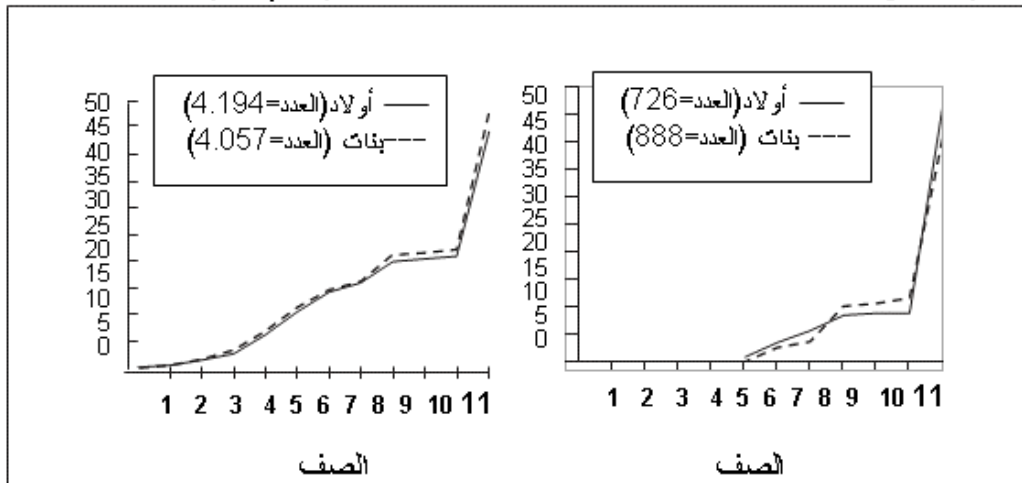
xv

3

الشكل البياني ٣ النسبة المتراكمة للمراهقين الذين تركوا المدرسة، وفقاً للصف والجنس

العينة الإجمالية

العينة المترابطة



) 4 (5 . ()

19

() : xvi () () ()

Bommier and Lambert 2000;)

.(Lloyd et al. 2000

) Household assets index .(

(Filmer and Pritchett 1999) proxy

xvii

20

.(Assaad 2001)

" "

" "

." " 20

4

) (

El Tawila et al.) (%59 %75) (2001)

%11 1995 .(Mensch et al. 2000)
 Amin and Lloyd) %21
 .(1998

4

(865=)		(707=)		
2	1	2	1	
1.13	1.10	+0.86	+0.86	()
1.32	**0.31	+0.00	*0.25	(=)
0.88	0.79	0.98	0.87	
0.98	1.00	+0.74	*0.74	
0.96	0.96	*0.83	*0.83	
0.64	0.70	0.87	0.93	(=)
0.89	1.03	1.00	0.85	
*5.73		1.27		(1 =)
*0.71		1.09		
0.82		1.29		(%)
*1.23		*1.47		
1.03		1.03) (
0.80		1.56		()
*0.69		1.50		(=)
0.97		0.70)

(865=)		(707=)		
2	1	2	1	
				(=
+0.88		1.26		(%) /
0.71		0.91		(%)
1.13		2.62		
1.01		1.12		
0.73		1.23		(%)
1.49		0.87		(%)
0.99		*0.50		(%)
**0.71		0.63		(%)
0.99		1.03		(1-= 1=)
1.13		1.50		1=) (1-=
0.98		0.82		" " (%) (

+P<0.10; *P<0.05; **P<0.01

(5)

xix

.(%39 %31)

Logistic Regression

5

()

(865=)		(707=)		
2	1	2	1	
**2.08	**2.13	+1.28	1.24	()
0.78	**0.27	*0.00	*0.26	(=)
0.78	+0.73	1.05	0.95	
1.04	1.02	+0.77	+0.79	
0.98	0.98	*0.84	*0.85	
0.65	0.77	0.88	0.95	(=)
0.84	0.77	0.97	0.81	
*6.46		1.21		(1 =)
+0.70		1.15		
0.87		1.29		(%)
+1.20		+1.46		
1.04		1.02) (

(865=)		(707=)		
2	1	2	1	
0.81		1.55		()
**0.61		1.45		(=)
0.86		0.69) (=
**0.86		1.25		(%) /
*0.68		0.95		(%)
1.07		2.44		
0.97		1.12		
0.63		1.30		(%)
*1.92		0.89		(%)
0.89		**0.51		(%)
*1.84		0.60		(%)
1.00		1.04		(1- = 1=)
1.12		1.50		1=) (1-=
0.91		0.84		(%) " "

+P<0.10; *P<0.05; **P<0.01



.()
 .()
 .(/ 12) %
 ()
 %
 %
 %
) ()
 %
 .()
 .())
 .() ()
 .())
 .
 .
 %
 %
 - . %
 -
 .
 / %
 .
 %
 .
 %
 .
 %
 .
 ()
 %

·
·

%

·

%

·

·
() 1999-1998
" "

·()

/

%

·

·

·

)

/

·(1- =

1 =

/
·(1- =

1 =

" "

)

·()

%

%

·

/

%

/

·

·

%

·

%

·

%

·

%

·

%

·

·

%

REFERENCES

- Amin, Sajeda and Cynthia B. Lloyd. 1998. "Women's lives and rapid fertility decline: Some lessons from Bangladesh and Egypt," Policy Research Division Working Paper no. 117. New York: Population Council.
- Assaad, Ragui. 1997a. "The effects of public sector hiring and compensation policies on the Egyptian labor market," *The World Bank Economic Review* 11(1): 85–118.
- . 1997b. "The employment crisis in Egypt: Current trends and future prospects," *Research in Middle East Economics* 2(1): 39–66.
- . 1999. Personal communication.
- . 2001. Personal communication.
- Behrman, Jere R. and Nancy Birdsall. 1983. "The quality of schooling: Quantity alone is misleading," *The American Economic Review* 73(5): 928–946.
- Betts, Julian R. 1996. "Is there a link between school inputs and earnings? Fresh scrutiny of an old literature," in G. Burtless (ed.), *Does Money Matter? The Effect of School Resources on Student Achievement and Adult Success*. Washington, DC: Brookings Institution Press, pp. 140–191.
- Bommier, Antoine and Sylvie Lambert. 2000. "Education demand and age at school enrollment in Tanzania," *The Journal of Human Resources* 35(1): 177–203.
- Card, David and Alan B. Krueger. 1992. "Does school quality matter? Returns to education and the characteristics of public schools in the United States," *Journal of Political Economy* 100(1): 1–40.
- . 1996. "Labor market effects of school quality: Theory and evidence," in G. Burtless (ed.), *Does Money Matter? The Effect of School Resources on Student Achievement and Adult Success*. Washington, DC: Brookings Institution Press, pp. 97–

139.

El Tawila, Sahar, Barbara Ibrahim, Omaima El-Gibaly, Fikrat El Sahn, Sunny Sallam, Susan M. Lee, Barbara Mensch, Hind Wassef, Sarah Bukhari, and Osman Galal.

1999. *Transitions to Adulthood: A National Survey of Egyptian Adolescents*. Cairo: Population Council.

El Tawila, Sahar, Hind Wassef, Cynthia B. Lloyd, Barbara S. Mensch, and Zeinab Gamal.

2001. *The School Environment in Egypt: A Situation Analysis of Public Preparatory Schools*. Cairo: Population Council.

Filmer, Deon and Lant Pritchett. 1999. "The effect of household wealth on educational attainment: Evidence from 35 countries," *Population and Development Review* 25(1): 85–120.

Fuller, Bruce and Prema Clarke. 1994. "Raising school effects while ignoring culture? Local conditions and the influence of classroom tools, rules and pedagogy," *Review of Educational Research* 64(1): 119–158.

Glewwe, Paul. 1999. "School quality, student achievement, and fertility in developing countries," in Caroline H. Bledsoe, John B. Casterline, Jennifer A. Johnson-Kuhn, and John G. Haaga (eds.), *Critical Perspectives on Schooling and Fertility in the Developing World*. Washington, DC: National Academy Press, pp. 105–137.

Glewwe, Paul, Margaret Grosch, Hanan Jacoby, and Marlaine Lockheed. 1995. "An eclectic approach to estimating the determinants of achievement in Jamaican primary education," *The World Bank Economic Review* 9(2): 231–258.

Glewwe, Paul and Hanan Jacoby. 1994. "Student achievement and schooling choice in low income countries: Evidence from Ghana," *The Journal of Human Resources* 29(3): 843–864.

Grogger, Jeff and Eric Eide. 1995. "Changes in college skills and the

- rise in the college wage premium,” *The Journal of Human Resources* 30(2): 280–310.
- Hanushek, Eric A. and Victor Lavy. 1994. “School quality, achievement bias, and drop- out behavior in Egypt,” Living Standards Measurement Study Working Paper no. 107. Washington, DC: World Bank.
- Harbison, Ralph W. and Eric A. Hanushek. 1992. *Educational Performance of the Poor: Lessons from Rural Northeast Brazil*. New York: Oxford University Press.
- Hussein, Salwa. 1988. “Socio-economic disparities and internal migration among Egyptian governorates,” in *Studies in African and Asian Demography: CDC Annual Seminar, 1987*. Cairo Demographic Centre Research Monograph Series no. 17, pp. 199–247.
- Leibowitz, Arlene. 1974. “Home investments in children,” *The Journal of Political Economy* 82(2, part 2): S111–S131.
- Lloyd, Cynthia B. and Barbara Mensch. 1999. “Implications of formal schooling for girls’ transitions to adulthood in developing countries,” in Caroline H. Bledsoe, John B. Casterline, Jennifer A. Johnson-Kuhn, and John G. Haaga (eds.), *Critical Perspectives on Schooling and Fertility in the Developing World*. Washington, DC: National Academy Press, pp. 80–104.
- Lloyd, Cynthia B., Barbara S. Mensch, and Wesley H. Clark. 2000. “The effects of primary school quality on school dropout among Kenyan girls and boys,” *Comparative Education Review* 44(2): 113–147.
- Lockheed, Marlaine E.E. and Adriaan M. Verspoor. 1991. *Improving Primary Education in Developing Countries*. New York: Oxford University Press.
- Mahrouse, M.E. 1994. “Egypt: System of education,” in Torsten Husén and T. Neville Postlethwaite (eds.), *The International Encyclopedia*

of Education, 2nd ed., vol. 1. Oxford and New York: Pergamon, pp. 1939–1947.

Mensch, Barbara S., Barbara L. Ibrahim, Susan M. Lee, and Omaila El-Gibaly. 2000.

“Socialization to gender roles and marriage among Egyptian adolescents,” Policy Research Division Working Paper no. 140. New York: Population Council.

Mensch, Barbara S. and Cynthia B. Lloyd. 1998. “Gender differences in the schooling experiences of adolescents in low-income countries: The case of Kenya,” *Studies in Family Planning* 29(2): 167–184.

Mincer, Jacob. 1974. *Schooling, Experience, and Earnings*. New York: National Bureau of Economic Research, distributed by Columbia University Press.

Murnane, Richard J., John B. Willett, and Frank Levy. 1995. “The growing importance of cognitive skills in wage determination,” *The Review of Economics and Statistics* 77(2): 251–266.

Naguib, Nora Guhl and Cynthia B. Lloyd. 1994. *Gender Inequalities and Demographic Behavior: Egypt*. New York: Population Council.

Nawar, Laila, Cynthia B. Lloyd, and Barbara Ibrahim. 1995. “Women’s autonomy and gender roles in Egyptian families,” in Carla Makhlouf Obermeyer (ed.), *Family, Gender, and Population in the Middle East: Policies in Context*. Cairo: American University in Cairo Press, pp. 147–178.

Psacharopoulos, George. 1989. “Time trends of the returns to education: Cross-national evidence,” *Economics of Education Review* 8(3): 225–231.

Schultz, T. Paul. 1987. “School expenditures and enrollments, 1960–1980,” in D. Gale Johnson and Ronald D. Lee (eds.), *Population Growth and Economic Development: Issues and Evidence*.

12

6

)

.(

.
.

" "

%90

%5

. %90

(

)

:

-

-

/

(%1

4.2)

:

:

/

/
