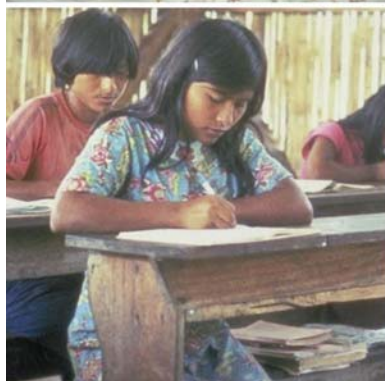


# FACTS ABOUT ADOLESCENTS FROM THE DEMOGRAPHIC AND HEALTH SURVEY

## Statistical Tables for Program Planning

### PAKISTAN 1990-1991





One Dag Hammarskjold Plaza  
New York, New York 10017  
Telephone: 001 212-339-0500  
Fax: 001 212-755-6052  
e-mail: [pubinfo@popcouncil.org](mailto:pubinfo@popcouncil.org)  
[www.popcouncil.org](http://www.popcouncil.org)

The Population Council is an international, nonprofit, nongovernmental institution that seeks to improve the well-being and reproductive health of current and future generations around the world and to help achieve a humane, equitable, and sustainable balance between people and resources. The Council conducts biomedical, social science, and public health research and helps build research capacities in developing countries. Established in 1952, the Council is governed by an international board of trustees. Its New York headquarters supports a global network of regional and country offices.

Copyright © 2001 by The Population Council, Inc.

Any part of this report may be copied or adapted to meet local needs without permission from the Population Council, provided that the parts copied are distributed free or at cost (not for profit) and that the source is identified. Citation should take the following form: "Facts about adolescents from the Demographic and Health Survey—Statistical tables for program planning: Pakistan 1990-1991." 2001. New York: Population Council. Any commercial reproduction requires prior permission from the Population Council. The Population Council would appreciate receiving a copy of any materials in which the text is used.

---

Cover photos courtesy of M/MC Photoshare at [www.jhuccp.org/mmc](http://www.jhuccp.org/mmc)

Photograph credits

First row: Harvey Nelson, Aimee Centivany, Kathryn Wolford for Lutheran World Relief

Second row: Lutheran World Relief, Liz Gilbert for the Packard Foundation, Lauren Goodsmith

Third row: Lutheran World Relief, Lutheran World Relief, Liz Gilbert for the Packard Foundation

## Foreword

The Population Council initiated its work on adolescents in earnest in the mid-1990s. At that time, those advocating greater attention to adolescent issues were concerned about adolescent fertility—particularly fertility outside of marriage—and, responding to the experiences of Western countries, about adolescent “risk-taking” behavior. As an international scientific organization with its mandate centered around the needs of developing countries, the Population Council sought a more nuanced and context-specific understanding of the opportunities and problems confronting adolescents in the developing world.

As a first step, the Council published a book titled *The Uncharted Passage: Girls’ Adolescence in the Developing World* (Mensch, Bruce, and Greene, 1998). In working with our colleagues inside and outside of the Council, at national and international levels, it became clear that information on adolescents, and the way data are organized, were limiting our ability to understand the diversity of their experiences or to develop programs to address that diversity. Even the words used to describe the 10-19-year-old age group (in English) presented an obstacle. Terms such as youth, adolescents, young people, and teenagers are gender-free. An age group spanning a decade was singularly inappropriate given the rapidity of transitions in this period; even five-year cohorts (10-14 and 15-19) are arguably unreasonably large.

While recognizing these limitations, we nonetheless saw the Demographic and Health Survey results as extremely useful to those seeking to understand and plan for adolescents, provided the data were organized with full understanding of their strengths and weaknesses. In the absence of data, many adolescent policies were implicitly based on the premise that the lives of adolescents in developing countries were like those of adolescents in Western countries; that is, mainly living at home with families, not working, in school, and unmarried. In fact there are significant numbers of young people in the West who do not fit this description, but even larger groups within the developing countries. Perhaps the starkest difference is the context of sexual activity: whereas the vast majority of sexually active adolescent girls in the West are unmarried, in the developing countries the vast majority are married.

In dialogue with colleagues at UNICEF, UNFPA, and PATH, and with the financial support of the United Nations Foundation, we have created tables to more clearly describe the diversity of the adolescent experience by drawing on the rich Demographic and Health Survey data. These tables are descriptive. We have included small points of commentary where something is particularly striking. We offer them to you for reflection, as a basis for developing programs, and as a basis, indeed, for arguing for an enrichment of the research attention devoted to the many transitions that occur between the ages of 10 and 19.

In addition to highlighting, wherever we could, salient dimensions and experience (e.g., schooling, work, and marital status) by age, gender, urban/rural, and economic class groupings, we also draw attention to adolescents’ living arrangements and the

shape of their families. Earlier work conducted cooperatively between the Council's International Programs and Policy Research Divisions highlighted some very surprising—often counterintuitive—facts about the “family.” Whether adolescents live with one, both, or neither parent, and whether they live with and are responsible for their younger siblings, significantly shape their schooling, work, and migration status. With increasing levels of rural-to-urban migration, and the AIDS epidemic, families under stress may tend to transfer adult burdens to their oldest children—especially to girls. Adolescent girls may be required to leave school or work for wages, sometimes in unsafe ways and away from their homes.

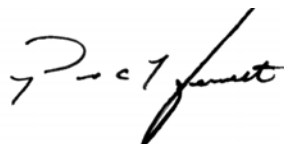
Another often neglected dimension of the “adolescent problematique” is the contrast between the experience of married and unmarried adolescents. Very often the experiences of married and unmarried adolescents are considered together—for example, on issues such as their level of information about and use of contraceptives. We believe that married and unmarried adolescents represent significantly different populations. Although differences between the groups may vary by topic, the difference between them is the point. In treating the adolescent population as homogeneous, the profile and needs of married adolescents have very often been completely ignored. Married girls are plausibly the most vulnerable adolescents. Detached from a supportive peer group and from their natal or native home, often married by arrangement and facing a first pregnancy, married adolescent girls deserve our attention. The tabulations presented for some countries provide preliminary and rudimentary evidence that married adolescents are, if not at greater disadvantage than their unmarried counterparts, at least different, and we should plan for those differences.

This project will be ongoing. As data for additional countries and more recent data for the countries covered here become available, we will produce new sets of tables. And as we identify other tables of potential interest we will include them. We welcome your feedback and hope you find these tables useful.

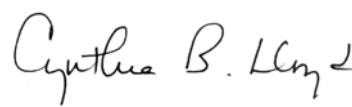
Finally, we would like to acknowledge the significant creative and analytic efforts of our colleagues in producing these tables. We thank Brian Pence, Carey Meyers, Erica Chong, Christine Pace, and Roberta Scheinman for their intellectual contributions and hard work in this undertaking.



**Judith Bruce, Senior Advisor**  
Director, Gender, Family, and  
Development Program  
International Programs Division  
Population Council



**Paul Hewett, Project Director**  
Research Associate  
Policy Research Division  
Population Council



**Cynthia B. Lloyd, Senior Advisor**  
Director of Social Science Research  
Policy Research Division  
Population Council

## Technical Notes:

1. All tables in this report are calculated from data collected for the 1990-1991 Pakistan Demographic and Health Survey (DHS), conducted by the National Institute of Population Studies (NIPS) in Pakistan and Macro International, Inc. The Pakistan DHS surveyed a nationally representative sample of 7,193 households. The information presented in Tables 1-7 is based on all usual residents within the age group(s) of the selected households. The calculations for Tables 8-11 are based on 6,611 currently or formerly married women between ages 15 and 49 who responded to a more detailed individual questionnaire. Data on awareness of HIV/AIDS, experience with sexually transmitted diseases, and female genital circumcision were not collected for Pakistan.

More information on the design of and results from the 1990-1991 Pakistan DHS is provided in the final report (NIPS and the Institute for Resource Development, Inc./Macro International, Inc. 1992. *Pakistan Demographic and Health Survey 1990-91*. Calverton, Maryland, USA: NIPS and Macro International, Inc.). More information on the Demographic and Health Surveys, including reports, other publications, and original data, is available on the DHS Web site at <http://www.measuredhs.com/>.

2. The tables report values for which data are available for the 1990-1991 Pakistan DHS. An X indicates that the information was not collected for that group in the 1990-1991 survey.
3. Unless specifically designated as "percent distribution," the cells represent percentages that do not sum to 100%. In most cases, the categories either are not mutually exclusive or do not exhaust the total population for the group. A guide to reading and interpreting the tables is included at the bottom of each page.
4. The measurement of economic status used to define the poorest 40%, middle 40%, and richest 20% of households in Tables 4-6 is based on a methodological approach discussed in Filmer, Deon and Lant Pritchett, 1999: "The Effect of Household Wealth on Educational Attainment: Evidence from 35 Countries," *Population and Development Review*, vol. 25(1): 85-120. Derived from their work, indicators of household asset ownership (car, bicycle, television, etc.) and household characteristics (piped water, electricity, etc.) were used to create a single measure of economic status. Although the classification of economic status can be used for relative comparisons of socioeconomic groups within a country, comparisons of groups across countries are not appropriate.

## List of Tables

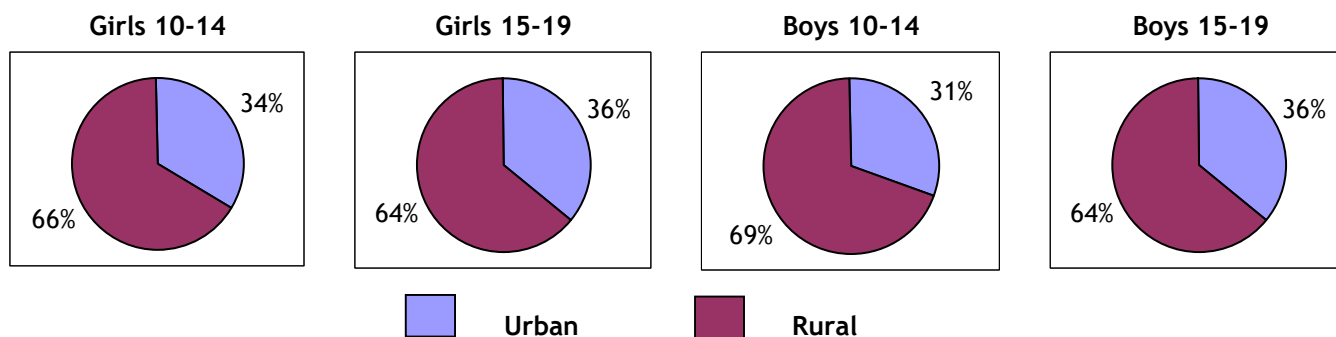
<b>Table 1</b>	Urban-Rural Residence and Population Distribution
<b>Table 2</b>	Parental Survival Status and Residence in Household
<b>Table 3</b>	Characteristics of Head of Household
<b>Table 4</b>	Educational Enrollment and Attainment
<b>Table 5</b>	Educational Enrollment and Attainment in Urban Areas
<b>Table 6</b>	Educational Enrollment and Attainment in Rural Areas
<b>Table 7</b>	Educational Enrollment in Urban and Rural Areas: Comparison Summary
<b>Table 8</b>	Marital Status
<b>Table 9</b>	Sexuality and Childbearing
<b>Table 10</b>	Educational Enrollment and Work Status
<b>Table 11</b>	Awareness and Use of Modern Contraceptive Methods
<b>Table 12</b>	Awareness of HIV/AIDS ( <i>Data not collected for Pakistan</i> )
<b>Table 13</b>	Experience with Sexually Transmitted Diseases ( <i>Data not collected for Pakistan</i> )
<b>Table 14</b>	Female Genital Circumcision ( <i>Data not collected for Pakistan</i> )

## A Summary of 1990-1991 DHS Data on Adolescents in Pakistan

**Table 1. Urban-Rural Residence and Population Distribution**

- Adolescents ages 10-19 comprise more than one-fifth of Pakistan's total population.
- About two-thirds of Pakistan's adolescents live in rural areas.
- A greater percentage of 15-19-year-old boys live in urban areas than 10-14-year-old boys.

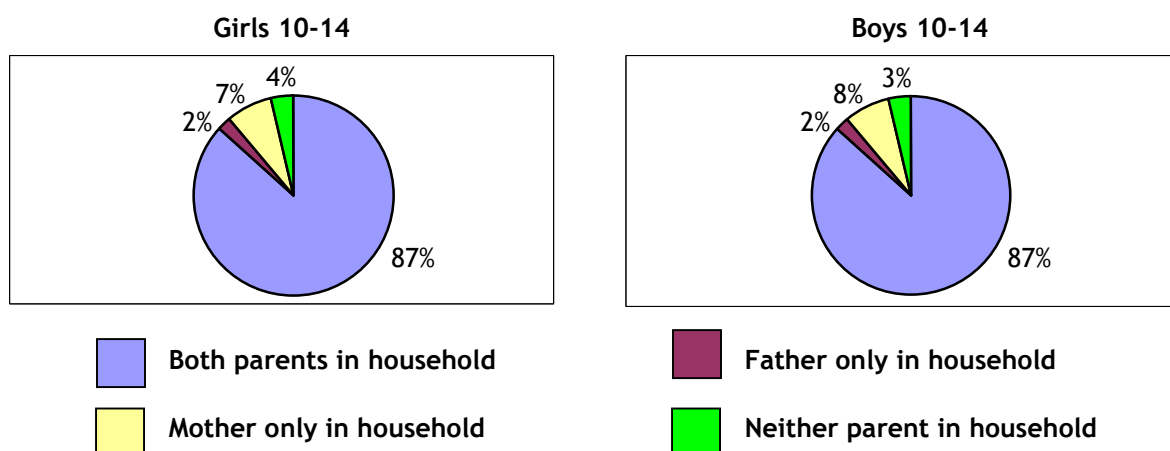
**Table 1. Urban-Rural Residence Distribution**



**Table 2. Parental Survival Status and Residence in Household**

- Almost nine out of ten adolescents 10-14 years old live with both parents.
- Girls and boys ages 10-14 have nearly identical parental residence patterns.
- More adolescents live with only their mother than live with only their father.
- Few adolescents live with neither parent in the household.

**Table 2. Patterns of Parent/Child Co-residence**



**Table 3. Characteristics of Head of Household**

- Few adolescents ages 10-19 (less than 8%) live in female-headed households.
- About one in six 10-14-year-olds lives in a household headed by someone other than a parent.

**Table 4. Educational Enrollment and Attainment**

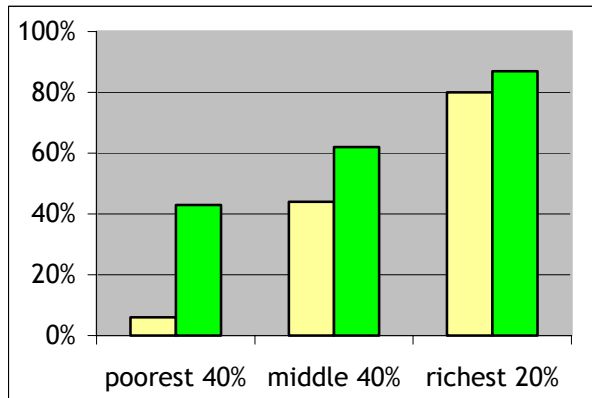
- For both sexes, a much greater percentage of 15-19-year-olds are not in school than 10-14-year-olds.
- More boys than girls are enrolled in school, and boys are much more likely than girls to have completed four or more years of education.
- Boys and girls ages 15-19 are more likely than older cohorts to complete four or more years of formal education.
- There is a positive relationship between economic status and educational attainment for both sexes, but it is stronger among females.

**Tables 5-7. Educational Enrollment and Attainment in Urban and Rural Areas**

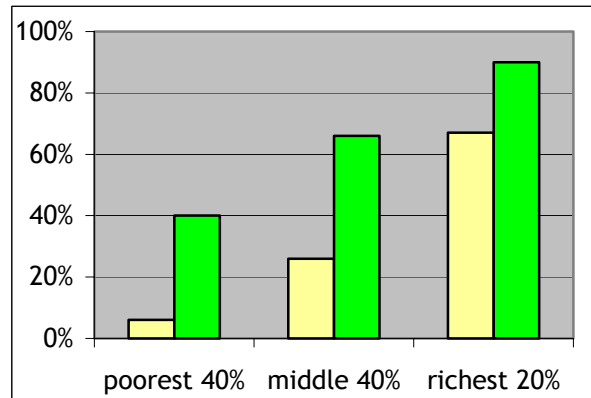
- More urban adolescents are enrolled in school than rural adolescents; the difference is more pronounced among girls than boys.
- The gender gap in educational attainment is wider in rural areas than in urban areas.
- There is a positive relationship between economic status and educational attainment for both sexes in both urban and rural areas; this relationship is strongest for urban girls. Only 6% of urban girls from the poorest 40% of households complete four or more years of school, compared to 80% of urban girls from the richest 20% of households.
- While urban adolescents overall are significantly more likely than rural adolescents to complete at least four years of school, girls and boys from the poorest 40% of households in urban and rural areas have similar completion rates.

**Tables 5 and 6. Educational Attainment**

**Urban youth 15-29 completing 4+ years of school**



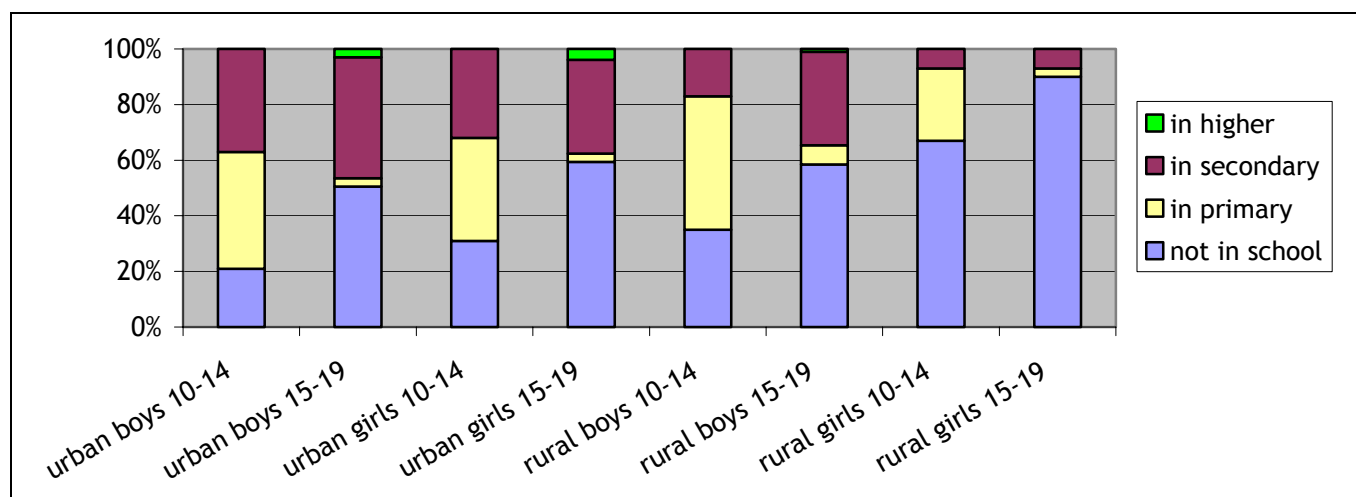
**Rural youth 15-29 completing 4+ years of school**



Yellow box: Girls

Green box: Boys

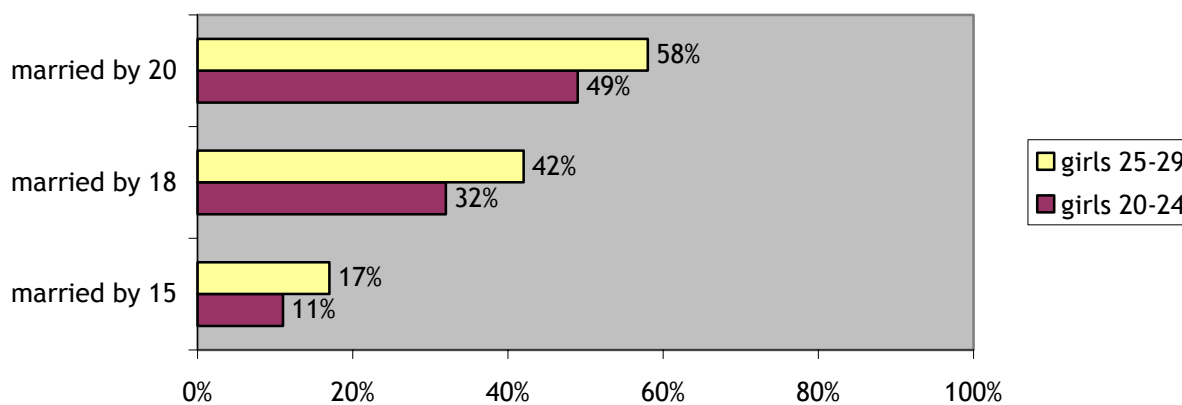
**Table 7. Educational Enrollment**



**Table 8. Marital Status**

- Twenty-two percent of girls ages 15-19 have ever been married compared to 4% of boys. No girls or boys 10-14 years old have ever been married.
- Half of girls ages 25-29 were married by age 18.9.
- There is a large drop between the two age cohorts in the percentages of girls getting married by ages 15, 18, and 20.

**Table 8. Age at Marriage**



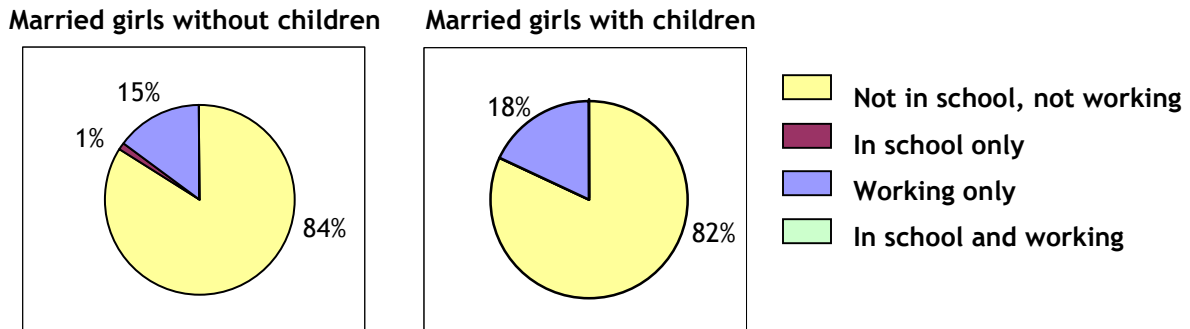
**Table 9. Sexuality and Childbearing**

- Almost two-thirds of ever-married 15-19-year-old girls have been pregnant, while about half have had a child.

**Table 10. Educational Enrollment and Work Status**

- About five out of six married girls 15-19 years old are neither in school nor working.
- Less than 1% of married girls are in school.
- About one-sixth of married girls ages 15-19 are working; married girls with children are slightly more likely to be working than married girls without children.

**Table 10. Educational Enrollment and Work Status of Girls 15-19 Years Old**



**Table 11. Awareness and Use of Modern Contraceptive Methods**

- Two-thirds of ever-married girls ages 15-19 have heard of a modern contraceptive method, but few (2%) have ever used one.

**Table 1**  
**Urban-Rural Residence and Population Distribution**

	Percent Distribution			Percent of Total Population
	Urban <sup>a</sup>	Rural <sup>a</sup>	Total	
<b>Girls</b>				
10-14	33.9	66.1	100.0	6.3
15-19	35.8	64.2	100.0	4.8
<b>Boys</b>				
10-14	30.7	69.3	100.0	6.9
15-19	35.5	64.5	100.0	5.2

<sup>a</sup> Refer to the DHS report cited in the Technical Notes for the definitions used for urban and rural areas.

**Guide to reading the table:**

- In the first column of percentages (under “Urban”), read the first number as the percentage of girls 10-14 years old who live in urban areas.
- In the fourth column of percentages (under “Percent of Total Population”), read the first number as the percentage of the total population who are girls 10-14 years old.

**Table 2**  
**Parental Survival Status and Residence in Household**  
**(Percent Distribution)**

Parental Survival Status					
	Both Parents Alive	Father Alive, Mother Dead	Mother Alive, Father Dead	Neither Parent Alive	Total
<b>Girls</b>					
10-14					
15-19					
<b>Data not collected for Pakistan</b>					
<b>Boys</b>					
10-14					
15-19					
Parents Resident in Household <sup>a</sup>					
	Both Parents in Household	Father Only in Household	Mother Only in Household	Neither Parent in Household	Total
<b>Girls</b>					
10-14	86.7	2.3	7.5	3.5	100.0
15-19	X	X	X	X	X
<b>Boys</b>					
10-14	87.0	2.4	7.4	3.2	100.0
15-19	X	X	X	X	X

<sup>a</sup> An adolescent is defined as not living with a parent if the parent is deceased or does not live in the household in which the adolescent resides.

**Guide to reading the table:**

- In the first column of percentages in the lower panel (under “Both Parents in Household”), read the first number as the percentage of girls 10-14 years old who live in households where both parents reside.

**Table 3**  
**Characteristics of Head of Household<sup>a</sup>**  
**(Percent)**

	<b>Female Household Head</b>	<b>Non-Parent Household Head</b>
<b>Girls</b>		
10-14	5.8	16.1
15-19	6.5	X
<b>Boys</b>		
10-14	7.2	15.4
15-19	6.2	X

<sup>a</sup> The head of each household was identified by the member of that household responding to the household survey.

**Guide to reading the table:**

- In the first column of percentages (under “Female Household Head”), read the first number as the percentage of girls 10-14 years old who live in households headed by a female.
- In the second column of percentages (under “Non-Parent Household Head”), read the first number as the percentage of girls 10-14 years old who live in households with someone other than their mother or father as head.

**Table 4**  
**Educational Enrollment and Attainment**

<b>Current Enrollment (Percent Distribution)</b>						
	<b>Not in School</b>	<b>In Primary<sup>a</sup></b>	<b>In Secondary<sup>b</sup></b>	<b>In Higher</b>	<b>Total</b>	
<b>Girls</b>						
10-14	55.1	29.8	15.1	0.0	100.0	
15-19	79.4	2.8	16.5	1.3	100.0	
<b>Boys</b>						
10-14	31.0	45.8	23.2	0.0	100.0	
15-19	55.8	5.2	37.6	1.3	100.0	
<b>Educational Attainment (Percent)</b>						
	<b>Completed 4+ Years</b>		<b>Completed Primary School</b>			
<b>Girls</b>						
15-19	39.7		37.7 <sup>d</sup>			
20-24	30.7		29.4			
25-29	25.9		24.9			
<b>Girls 15-29</b>						
Poorest 40% <sup>c</sup>	6.0		5.6			
Middle 40%	31.5		29.2			
Richest 20%	77.8		76.2			
<b>Boys</b>						
15-19	66.0		61.9 <sup>d</sup>			
20-24	60.4		58.1			
25-29	55.4		52.9			
<b>Boys 15-29</b>						
Poorest 40% <sup>c</sup>	40.2		36.6			
Middle 40%	64.9		61.5			
Richest 20%	87.4		85.6			

<sup>a</sup> Primary school in Pakistan consists of five grades.

<sup>b</sup> Secondary school in Pakistan consists of seven grades.

<sup>c</sup> For an explanation of these categories, refer to the Technical Notes at the beginning of this document.

<sup>d</sup> Because some 15-19-year-olds may still be attending primary school, caution should be used when comparing primary school completion rates of 15-19-year-olds to completion rates in older age groups or across countries.

**Guide to reading the table:**

- In the first column of percentages in the upper panel (under “Not in School”), read the first number as the percentage of girls 10-14 years old who are not currently enrolled in school.
- In the first column of percentages in the lower panel, read the fourth number (opposite “Poorest 40%”) as the percentage of girls 15-29 years old in the poorest 40% of households who have completed four or more years of formal education.

**Table 5**  
**Educational Enrollment and Attainment in Urban Areas<sup>a</sup>**

	Current Enrollment (Percent Distribution)				Total
	Not in School	In Primary <sup>b</sup>	In Secondary <sup>c</sup>	In Higher	
<b>Girls</b>					
10-14	31.4	37.0	31.6	0.0	100.0
15-19	59.9	2.9	33.5	3.7	100.0
<b>Boys</b>					
10-14	21.4	41.8	36.8	0.0	100.0
15-19	50.8	2.5	44.2	2.5	100.0
Educational Attainment (Percent)					
	Completed 4+ Years		Completed Primary School		
<b>Girls</b>					
15-19	69.6		66.8 <sup>e</sup>		
20-24	60.1		58.7		
25-29	54.9		53.5		
<b>Girls 15-29</b>					
Poorest 40% <sup>d</sup>	6.1		5.9		
Middle 40%	43.6		40.1		
Richest 20%	79.7		78.6		
<b>Boys</b>					
15-19	77.9		75.3 <sup>e</sup>		
20-24	72.2		71.0		
25-29	72.9		69.8		
<b>Boys 15-29</b>					
Poorest 40% <sup>d</sup>	43.2		40.1		
Middle 40%	62.1		59.3		
Richest 20%	86.9		85.1		

<sup>a</sup> Refer to the DHS report cited in the Technical Notes for the definitions used for urban and rural areas.

<sup>b</sup> Primary school in Pakistan consists of five grades.

<sup>c</sup> Secondary school in Pakistan consists of seven grades.

<sup>d</sup> For an explanation of these categories, refer to the Technical Notes at the beginning of this document.

<sup>e</sup> Because some 15-19-year-olds may still be attending primary school, caution should be used when comparing primary school completion rates of 15-19-year-olds to completion rates in older age groups or across countries.

**Guide to reading the table:**

- In the first column of percentages in the upper panel (under “Not in School”), read the first number as the percentage of girls 10-14 years old living in urban areas who are not currently enrolled in school.
- In the first column of percentages in the lower panel, read the fourth number (opposite “Poorest 40%”) as the percentage of girls 15-29 years old in the poorest 40% of households and living in urban areas who have completed four or more years of formal education.

**Table 6**  
**Educational Enrollment and Attainment in Rural Areas<sup>a</sup>**

	Current Enrollment (Percent Distribution)				Total
	Not in School	In Primary <sup>b</sup>	In Secondary <sup>c</sup>	In Higher	
<b>Girls</b>					
10-14	67.1	26.1	6.7	0.0	100.0
15-19	90.1	2.8	7.1	0.0	100.0
<b>Boys</b>					
10-14	35.3	47.6	17.2	0.0	100.0
15-19	58.6	6.7	34.0	0.6	100.0

	Educational Attainment (Percent)	
	Completed 4+ Years	Completed Primary School
<b>Girls</b>		
15-19	23.0	21.4 <sup>e</sup>
20-24	15.8	14.7
25-29	12.6	11.8
<b>Girls 15-29</b>		
Poorest 40% <sup>d</sup>	6.0	5.6
Middle 40%	25.8	24.0
Richest 20%	66.7	62.4
<b>Boys</b>		
15-19	59.4	54.5 <sup>e</sup>
20-24	54.1	51.2
25-29	46.7	44.6
<b>Boys 15-29</b>		
Poorest 40% <sup>d</sup>	40.0	36.4
Middle 40%	66.2	62.7
Richest 20%	90.0	88.3

<sup>a</sup> Refer to the DHS report cited in the Technical Notes for the definitions used for urban and rural areas.

<sup>b</sup> Primary school in Pakistan consists of five grades.

<sup>c</sup> Secondary school in Pakistan consists of seven grades.

<sup>d</sup> For an explanation of these categories, refer to the Technical Notes at the beginning of this document.

<sup>e</sup> Because some 15-19-year-olds may still be attending primary school, caution should be used when comparing primary school completion rates of 15-19-year-olds to completion rates in older age groups or across countries.

**Guide to reading the table:**

- In the first column of percentages in the upper panel (under “Not in School”), read the first number as the percentage of girls 10-14 years old living in rural areas who are not currently in school.
- In the first column of percentages in the lower panel, read the fourth number (opposite “Poorest 40%”) as the percentage of girls 15-29 years old in the poorest 40% of households and living in rural areas who have completed four or more years of formal education.

**Table 7**  
**Educational Enrollment in Urban and Rural Areas<sup>a</sup>: Comparison Summary**

	Current Enrollment (Percent)			
	Not in School		In Primary <sup>b</sup>	
	Urban	Rural	Urban	Rural
<b>Girls</b>				
10-14	31.4	67.1	37.0	26.1
15-19	59.9	90.1	2.9	2.8
<b>Boys</b>				
10-14	21.4	35.3	41.8	47.6
15-19	50.8	58.6	2.5	6.7
	In Secondary <sup>c</sup>		In Higher	
	Urban	Rural	Urban	Rural
	<b>Girls</b>			
10-14	31.6	6.7	0.0	0.0
15-19	33.5	7.1	3.7	0.0
<b>Boys</b>				
10-14	36.8	17.2	0.0	0.0
15-19	44.2	34.0	2.5	0.6

<sup>a</sup> Refer to the DHS report cited in the Technical Notes for the definitions used for urban and rural areas.

<sup>b</sup> Primary school in Pakistan consists of five grades.

<sup>c</sup> Secondary school in Pakistan consists of seven grades.

**Guide to reading the table:**

- In the first column of percentages in the upper panel (under “Not in School: Urban”), read the first number as the percentage of girls 10-14 years old living in urban areas who are not currently enrolled in school.
- In the second column of percentages in the upper panel (under “Not in School: Rural”), read the first number as the percentage of girls 10-14 years old living in rural areas who are not currently enrolled in school.

**Table 8**  
**Marital Status**  
**(Percent Distribution)**

	Never-Married	Currently Married	Separated, Divorced, or Widowed	Total
<b>Girls</b>				
10-14	100.0	0.0	0.0	100.0
15-19	77.3	22.2	0.5	100.0
<b>Boys</b>				
10-14	100.0	0.0	0.0	100.0
15-19	96.2	3.7	0.1	100.0
	Married by Age 15 (Percent) <sup>a</sup>	Married by Age 18 (Percent) <sup>a</sup>	Married by Age 20 (Percent) <sup>a</sup>	Median Age at First Marriage (Years)
<b>Girls</b>				
20-24	11.4	31.6	48.9	N/A <sup>b</sup>
25-29	16.5	42.3	58.4	18.9
<b>Boys</b>				
20-24	X	X	X	X
25-29	X	X	X	X

<sup>a</sup> Defined as the percentage of girls in each age group who were married by their 15<sup>th</sup>, 18<sup>th</sup>, or 20<sup>th</sup> birthday, respectively. Given that the sample is of ever-married women only, the percentages are mathematically adjusted so they are representative of all women. This is done by deflating the percentage married in the age group by the proportion never-married. The latter information is obtained from the household listing of women by marital status and age.

<sup>b</sup> Omitted because less than 50% of girls ages 20-24 were married by age 20.

**Guide to reading the table:**

- In the first column of percentages in the upper panel (under “Never-Married”), read the second number as the percentage of girls 15-19 years old who have never been married.
- In the first column of percentages in the lower panel (under “Married by Age 15”), read the second number as the percentage of girls 25-29 years old who were married by their 15<sup>th</sup> birthday.
- In the last column of percentages in the lower panel (under “Median Age at First Marriage”), read the second number as the age by which 50% of girls 25-29 years old were married.

**Table 9  
Sexuality and Childbearing  
(Percent)**

	Ever Had Sexual Intercourse			Sexually Active			Of Sexually Active, the Percent Married
	Of Never-Married	Of Total	Median Age at 1 <sup>st</sup> Sex (Years)	Of Unmarried	Of Married	Of Total	
<b>Girls</b>							
10-14							
15-19							
<b>Data not collected for Pakistan</b>							
<b>Boys</b>							
10-14							
15-19							
	Ever Pregnant <sup>a</sup>			Ever Had Child			
	Of Never-Married	Of Ever-Married <sup>b</sup>	Of Total	Of Never-Married	Of Ever-Married <sup>b</sup>	Of Total	
<b>Girls</b>							
10-14	X	X	X	X	X	X	
15-19	X	63.2	X	X	49.0	X	

<sup>a</sup> The DHS collected information on past live births and current pregnancy status at the time of the interview. Information was not collected on miscarriages, stillbirths, or abortions, and hence is not included in the calculation of “ever pregnant.” This statistic, therefore, is likely to be an underestimate of the true percentage of girls who have ever been pregnant.

<sup>b</sup> “Ever-married” refers to girls who are currently married, separated, divorced, or widowed.

**Guide to reading the table:**

- In the second column of percentages in the lower panel (under “Ever Pregnant: Of Ever-Married”), read the second number as the percentage of ever-married girls 15-19 years old who have ever been pregnant.

**Table 10**  
**Educational Enrollment and Work<sup>a</sup> Status<sup>b</sup>**  
**(Percent Distribution)**

	<b>Not in School, Not Working</b>	<b>In School Only</b>	<b>Working Only</b>	<b>In School and Working</b>	<b>Total</b>
<b>Married<sup>c</sup>, Without Children</b>					
<b>Girls</b>					
10-14	X	X	X	X	X
15-19	84.0	0.9	15.1	0.0	100.0
<b>Married<sup>c</sup>, With Children</b>					
<b>Girls</b>					
10-14	X	X	X	X	X
15-19	82.2	0.3	17.4	0.0	100.0

<sup>a</sup> Work is defined as both formal and informal, and excludes housework. It includes activities that are paid in cash or in kind, as well as work for a family farm or business.

<sup>b</sup> Information on work and parental status was not collected for boys.

<sup>c</sup> "Married" refers to girls who are currently married.

**Guide to reading the table:**

- In the first column of percentages in the upper panel (under "Married, Without Children: Not in School, Not Working"), read the second number as the percentage of married girls 15-19 years old, without children, who are neither in school nor working.

**Table 11**  
**Awareness and Use of Modern Contraceptive Methods**  
**(Percent of Ever-Married)**

	<b>Heard of a Modern Method of Contraception<sup>a</sup></b>	<b>Ever Used a Modern Method<sup>a</sup></b>
<b>Girls</b>		
10-14	X	X
15-19	66.3	2.4
<b>Boys</b>		
10-14	X	X
15-19	X	X

<sup>a</sup> “Modern methods” of contraception include the oral contraceptive pill, intrauterine device, injections, diaphragm/foam/jelly, condom, female sterilization, male sterilization, and implants, including Norplant<sup>®</sup>.

**Guide to reading the table:**

- In the first column of percentages (under “Heard of a Modern Method of Contraception”), read the second number as the percentage of ever-married girls 15-19 years old who have heard of a modern method of contraception.

**Table 12**  
**Awareness of HIV/AIDS**  
**(Percent of Ever-Married)**

	<b>Heard Of HIV/AIDS</b>	<b>Know Someone Who Has or Has Died of HIV/AIDS</b>
<b>Girls</b>		
10-14		
15-19		
	<b>Data not collected for Pakistan</b>	
<b>Boys</b>		
10-14		
15-19		
	<b>Know a Healthy-Looking Person Can Have HIV/AIDS</b>	<b>Perceive Themselves to Be at Moderate or Great Risk of HIV/AIDS</b>
<b>Girls</b>		
10-14		
15-19		
	<b>Data not collected for Pakistan</b>	
<b>Boys</b>		
10-14		
15-19		

**Table 13**  
**Experience with Sexually Transmitted Diseases (STDs)**  
**(Percent of Ever-Married)**

	Heard of an STD	Have Had an STD in Last 12 Months	Sought Advice During Last Episode of an STD
<b>Girls</b>			
10-14			
15-19			
	<b>Data not collected for Pakistan</b>		
<b>Boys</b>			
10-14			
15-19			

**Table 14**  
**Female Genital Circumcision**  
**(Percent of Ever-Married)**

	<b>Circumcised</b>	<b>Median Age at Circumcision (Years)</b>	<b>Have Circumcised / Will Circumcise Eldest Daughter</b>
<b>Girls</b>			
10-14			
15-19			
20-24			

**Data not collected for Pakistan**