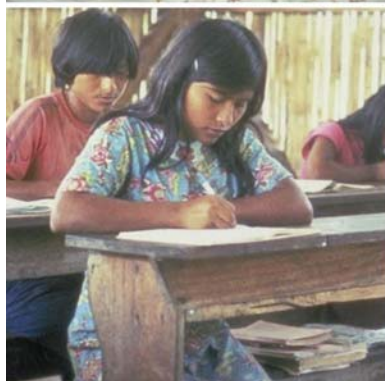


# FACTS ABOUT ADOLESCENTS FROM THE DEMOGRAPHIC AND HEALTH SURVEY

## Statistical Tables for Program Planning

### UGANDA 1995





One Dag Hammarskjold Plaza  
New York, New York 10017  
Telephone: 001 212-339-0500  
Fax: 001 212-755-6052  
e-mail: [pubinfo@popcouncil.org](mailto:pubinfo@popcouncil.org)  
[www.popcouncil.org](http://www.popcouncil.org)

The Population Council is an international, nonprofit, nongovernmental institution that seeks to improve the well-being and reproductive health of current and future generations around the world and to help achieve a humane, equitable, and sustainable balance between people and resources. The Council conducts biomedical, social science, and public health research and helps build research capacities in developing countries. Established in 1952, the Council is governed by an international board of trustees. Its New York headquarters supports a global network of regional and country offices.

Copyright © 2001 by The Population Council, Inc.

Any part of this report may be copied or adapted to meet local needs without permission from the Population Council, provided that the parts copied are distributed free or at cost (not for profit) and that the source is identified. Citation should take the following form: "Facts about adolescents from the Demographic and Health Survey—Statistical tables for program planning: Uganda 1995." 2001. New York: Population Council. Any commercial reproduction requires prior permission from the Population Council. The Population Council would appreciate receiving a copy of any materials in which the text is used.

---

Cover photos courtesy of M/MC Photoshare at [www.jhuccp.org/mmc](http://www.jhuccp.org/mmc)

Photograph credits

First row: Harvey Nelson, Aimee Centivany, Kathryn Wolford for Lutheran World Relief

Second row: Lutheran World Relief, Liz Gilbert for the Packard Foundation, Lauren Goodsmith

Third row: Lutheran World Relief, Lutheran World Relief, Liz Gilbert for the Packard Foundation

## Foreword

The Population Council initiated its work on adolescents in earnest in the mid-1990s. At that time, those advocating greater attention to adolescent issues were concerned about adolescent fertility—particularly fertility outside of marriage—and, responding to the experiences of Western countries, about adolescent “risk-taking” behavior. As an international scientific organization with its mandate centered around the needs of developing countries, the Population Council sought a more nuanced and context-specific understanding of the opportunities and problems confronting adolescents in the developing world.

As a first step, the Council published a book titled *The Uncharted Passage: Girls’ Adolescence in the Developing World* (Mensch, Bruce, and Greene, 1998). In working with our colleagues inside and outside of the Council, at national and international levels, it became clear that information on adolescents, and the way data are organized, were limiting our ability to understand the diversity of their experiences or to develop programs to address that diversity. Even the words used to describe the 10-19-year-old age group (in English) presented an obstacle. Terms such as youth, adolescents, young people, and teenagers are gender-free. An age group spanning a decade was singularly inappropriate given the rapidity of transitions in this period; even five-year cohorts (10-14 and 15-19) are arguably unreasonably large.

While recognizing these limitations, we nonetheless saw the Demographic and Health Survey results as extremely useful to those seeking to understand and plan for adolescents, provided the data were organized with full understanding of their strengths and weaknesses. In the absence of data, many adolescent policies were implicitly based on the premise that the lives of adolescents in developing countries were like those of adolescents in Western countries; that is, mainly living at home with families, not working, in school, and unmarried. In fact there are significant numbers of young people in the West who do not fit this description, but even larger groups within the developing countries. Perhaps the starkest difference is the context of sexual activity: whereas the vast majority of sexually active adolescent girls in the West are unmarried, in the developing countries the vast majority are married.

In dialogue with colleagues at UNICEF, UNFPA, and PATH, and with the financial support of the United Nations Foundation, we have created tables to more clearly describe the diversity of the adolescent experience by drawing on the rich Demographic and Health Survey data. These tables are descriptive. We have included small points of commentary where something is particularly striking. We offer them to you for reflection, as a basis for developing programs, and as a basis, indeed, for arguing for an enrichment of the research attention devoted to the many transitions that occur between the ages of 10 and 19.

In addition to highlighting, wherever we could, salient dimensions and experience (e.g., schooling, work, and marital status) by age, gender, urban/rural, and economic class groupings, we also draw attention to adolescents’ living arrangements and the

shape of their families. Earlier work conducted cooperatively between the Council's International Programs and Policy Research Divisions highlighted some very surprising—often counterintuitive—facts about the “family.” Whether adolescents live with one, both, or neither parent, and whether they live with and are responsible for their younger siblings, significantly shape their schooling, work, and migration status. With increasing levels of rural-to-urban migration, and the AIDS epidemic, families under stress may tend to transfer adult burdens to their oldest children—especially to girls. Adolescent girls may be required to leave school or work for wages, sometimes in unsafe ways and away from their homes.

Another often neglected dimension of the “adolescent problematique” is the contrast between the experience of married and unmarried adolescents. Very often the experiences of married and unmarried adolescents are considered together—for example, on issues such as their level of information about and use of contraceptives. We believe that married and unmarried adolescents represent significantly different populations. Although differences between the groups may vary by topic, the difference between them is the point. In treating the adolescent population as homogeneous, the profile and needs of married adolescents have very often been completely ignored. Married girls are plausibly the most vulnerable adolescents. Detached from a supportive peer group and from their natal or native home, often married by arrangement and facing a first pregnancy, married adolescent girls deserve our attention. The tabulations presented for some countries provide preliminary and rudimentary evidence that married adolescents are, if not at greater disadvantage than their unmarried counterparts, at least different, and we should plan for those differences.

This project will be ongoing. As data for additional countries and more recent data for the countries covered here become available, we will produce new sets of tables. And as we identify other tables of potential interest we will include them. We welcome your feedback and hope you find these tables useful.

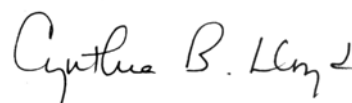
Finally, we would like to acknowledge the significant creative and analytic efforts of our colleagues in producing these tables. We thank Brian Pence, Carey Meyers, Erica Chong, Christine Pace, and Roberta Scheinman for their intellectual contributions and hard work in this undertaking.



**Judith Bruce, Senior Advisor**  
Director, Gender, Family, and  
Development Program  
International Programs Division  
Population Council



**Paul Hewett, Project Director**  
Research Associate  
Policy Research Division  
Population Council



**Cynthia B. Lloyd, Senior Advisor**  
Director of Social Science Research  
Policy Research Division  
Population Council

## Technical Notes:

1. All tables in this report are calculated from data collected for the 1995 Uganda Demographic and Health Survey (DHS), conducted by the Statistics Department of the Ministry of Finance and Economic Planning in Uganda and Macro International, Inc. The Uganda DHS surveyed a nationally representative sample of 7,550 households. The information presented in Tables 1-7 is based on all usual residents within the age group(s) of the selected households. The calculations for Tables 8-13 are based on 7,070 women between ages 15 and 49 who responded to a more detailed individual questionnaire. Data on female genital circumcision were not collected for Uganda.

More information on the design of and results from the 1995 Uganda DHS is provided in the final report (Statistics Department [Uganda] and Macro International, Inc. 1996. *Uganda Demographic and Health Survey 1995*. Calverton, Maryland, USA: Statistics Department and Macro International, Inc.). More information on the Demographic and Health Surveys, including reports, other publications, and original data, is available on the DHS Web site at <http://www.measuredhs.com/>.

2. The tables report values for which data are available for the 1995 Uganda DHS. An X indicates that the information was not collected for that group in the 1995 survey.
3. Unless specifically designated as “percent distribution,” the cells represent percentages that do not sum to 100%. In most cases, the categories either are not mutually exclusive or do not exhaust the total population for the group. A guide to reading and interpreting the tables is included at the bottom of each page.
4. The measurement of economic status used to define the poorest 40%, middle 40%, and richest 20% of households in Tables 4-6 is based on a methodological approach discussed in Filmer, Deon and Lant Pritchett, 1999: “The Effect of Household Wealth on Educational Attainment: Evidence from 35 Countries,” *Population and Development Review*, vol. 25(1): 85-120. Derived from their work, indicators of household asset ownership (car, bicycle, television, etc.) and household characteristics (piped water, electricity, etc.) were used to create a single measure of economic status. Although the classification of economic status can be used for relative comparisons of socioeconomic groups within a country, comparisons of groups across countries are not appropriate.

## List of Tables

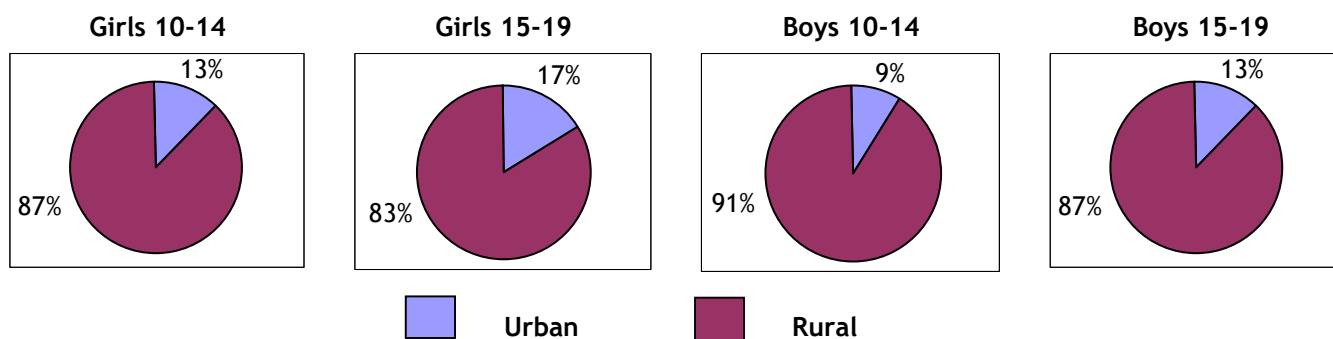
<b>Table 1</b>	Urban-Rural Residence and Population Distribution
<b>Table 2</b>	Parental Survival Status and Residence in Household
<b>Table 3</b>	Characteristics of Head of Household
<b>Table 4</b>	Educational Enrollment and Attainment
<b>Table 5</b>	Educational Enrollment and Attainment in Urban Areas
<b>Table 6</b>	Educational Enrollment and Attainment in Rural Areas
<b>Table 7</b>	Educational Enrollment in Urban and Rural Areas: Comparison Summary
<b>Table 8</b>	Marital Status
<b>Table 9</b>	Sexuality and Childbearing
<b>Table 10</b>	Educational Enrollment and Work Status
<b>Table 11</b>	Awareness and Use of Modern Contraceptive Methods
<b>Table 12</b>	Awareness of HIV/AIDS
<b>Table 13</b>	Experience with Sexually Transmitted Diseases
<b>Table 14</b>	Female Genital Circumcision ( <i>Data not collected for Uganda</i> )

## A Summary of 1995 DHS Data on Adolescents in Uganda

**Table 1. Urban-Rural Residence and Population Distribution**

- Adolescents ages 10-19 comprise almost one-quarter of Uganda's total population.
- More than four-fifths of Uganda's adolescents live in rural areas.
- A slightly greater percentage of 15-19-year-olds live in urban areas than 10-14-year-olds.

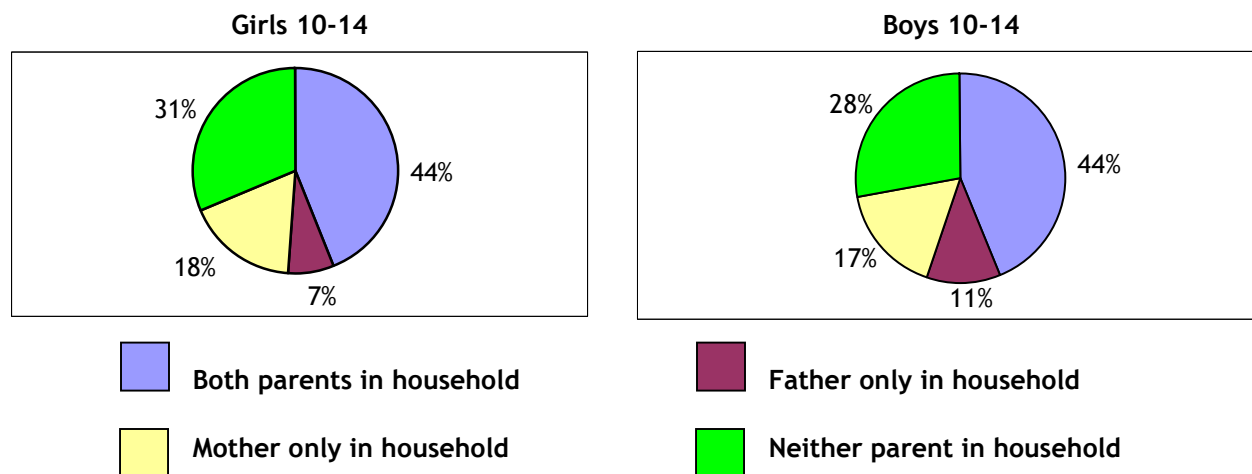
**Table 1. Urban-Rural Residence Distribution**



**Table 2. Parental Survival Status and Residence in Household**

- Almost one-quarter of adolescents ages 10-14 have lost one or both parents; more adolescents have deceased fathers than deceased mothers.
- Less than half of adolescents 10-14 years old live in households with both parents.
- Adolescents living with one parent are more likely to live with only their mother than with only their father; this is especially true for girls.
- About one-third of 10-14-year-olds live in households in which neither parent is present.

**Table 2. Patterns of Parent/Child Co-residence**



### Table 3. Characteristics of Head of Household

- About one-quarter of 10-19-year-olds live in female-headed households.
- Approximately one-third of adolescents ages 10-14 live in households headed by someone other than a parent.

### Table 4. Educational Enrollment and Attainment

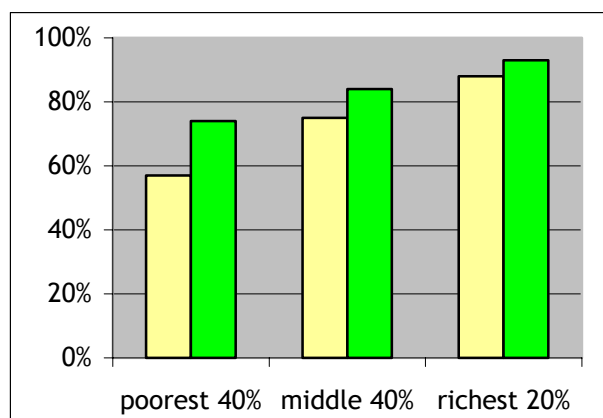
- Boys are more likely than girls to be in school. Less than one-fourth of girls ages 15-19 are enrolled in school, compared to half of boys in the same age group.
- While the gender gap in educational attainment has narrowed over the last ten years, boys are still more likely than girls to complete four or more years of school.
- There is a positive relationship between economic status and educational attainment for both boys and girls, but it is stronger for girls. For example, among 15-29-year-olds, 13% of girls from the poorest 40% of households and 58% of girls from the richest 20% of households completed primary school.

### Tables 5-7. Educational Enrollment and Attainment in Urban and Rural Areas

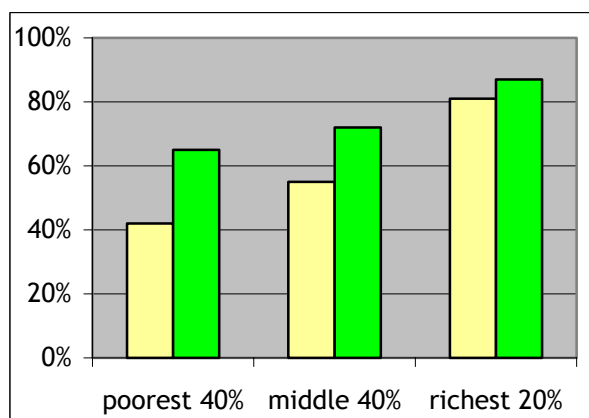
- While comparable proportions of urban and rural adolescents are enrolled in school overall, urban adolescents are about three times more likely than rural adolescents to be enrolled in secondary school.
- Urban adolescents have completed more schooling than rural adolescents; this difference is particularly striking when comparing primary school completion rates. Fifty-two percent of urban girls ages 15-19 completed primary school, compared to 19% of rural girls in the same age group.
- The positive relationship between economic status and educational attainment is slightly stronger in rural areas than in urban areas.

### Tables 5 and 6. Educational Attainment

Urban youth 15-29 completing 4+ years of school



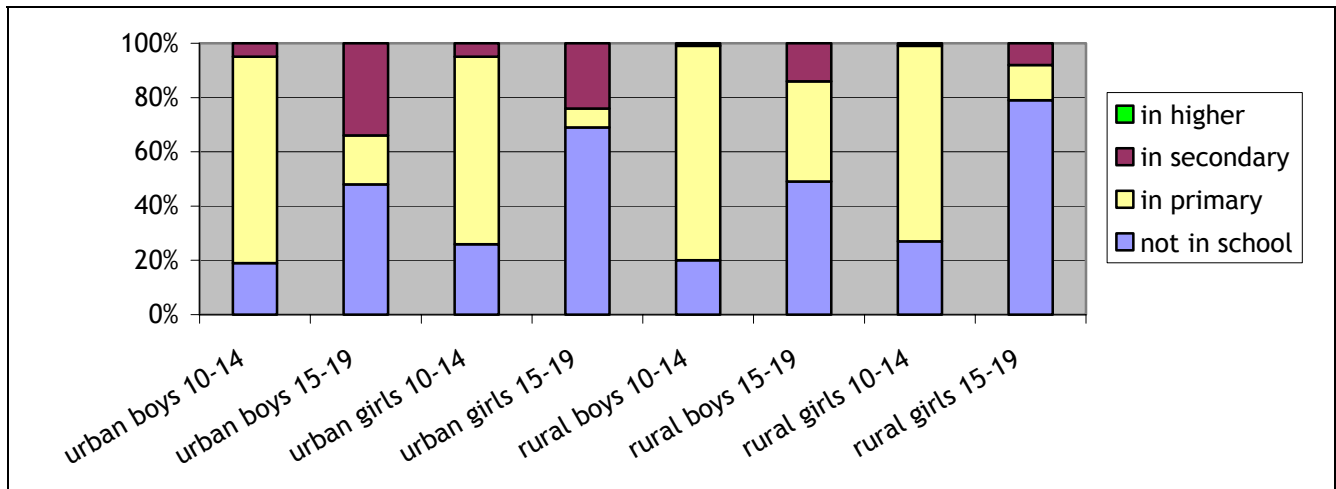
Rural youth 15-29 completing 4+ years of school



Girls

Boys

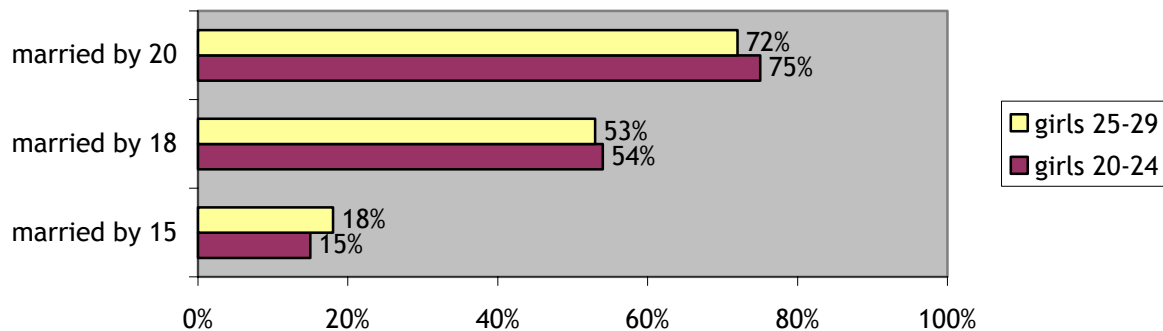
**Table 7. Educational Enrollment**



**Table 8. Marital Status**

- Nearly half of girls ages 15-19 are currently married or in a cohabiting union; 17% of these unions are polygynous.
- The median age at first marriage for the two age cohorts is nearly identical: 17.7 years for 20-24-year-old girls, and 17.8 years for 25-29-year-old girls.
- There have been no significant changes between the two age cohorts in the proportions of girls getting married by ages 15, 18, and 20.

**Table 8. Age at Marriage**



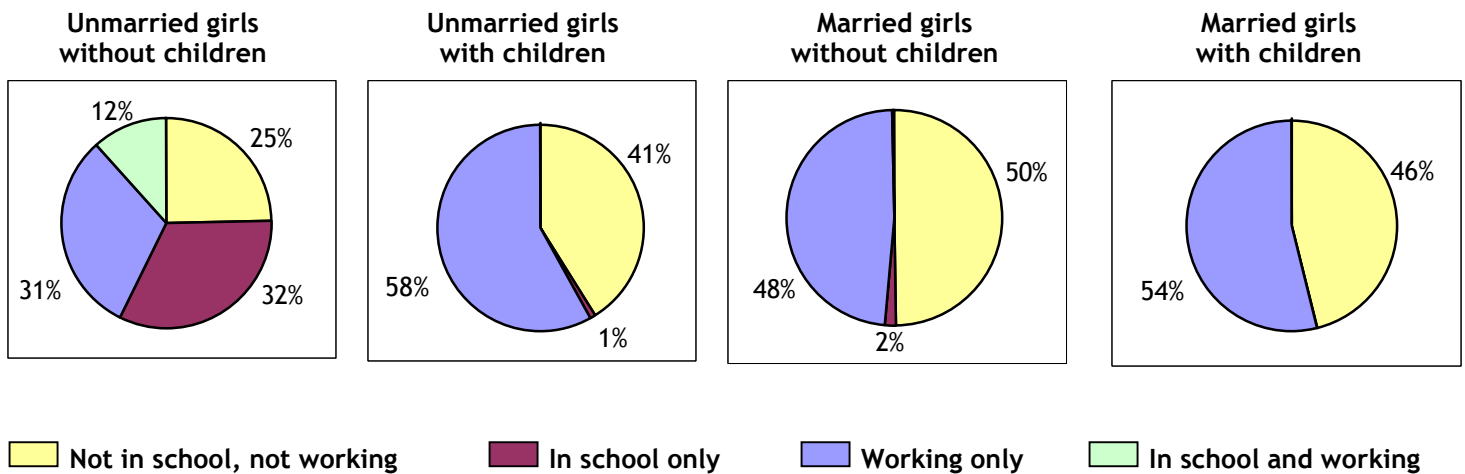
**Table 9. Sexuality and Childbearing**

- Sixty-two percent of girls ages 15-19 have ever had sexual intercourse, and 41% are sexually active.
- About one out of four never-married girls ages 15-19 has had sexual intercourse.
- Nine out of ten sexually active girls 15-19 years old are married.
- Seven percent of never-married girls and 62% of ever-married girls 15-19 years old have had a child.

**Table 10. Educational Enrollment and Work Status**

- Two out of five unmarried girls without children ages 15-19 are in school. About one-third of these girls are working simultaneously.
- Unmarried girls with children are the most likely group to be working.
- Roughly half of married girls 15-19 years old (both with and without children) are working, with the other half neither in school nor working.

**Table 10. Educational Enrollment and Work Status of Girls 15-19 Years Old**



**Table 11. Awareness and Use of Modern Contraceptive Methods**

- Ever-married girls ages 15-19 are more likely than never-married girls in the same age group to have heard of a modern contraceptive method (92% vs. 78%).
- Fewer than 9% of girls ages 15-19 have ever used a modern method of contraception.
- Among sexually active 15-19-year-olds, never-married girls are more than four times as likely as ever-married girls to be using a modern contraceptive method (22% vs. 5%).

**Table 12. Awareness of HIV/AIDS**

- Nearly all girls 15-19 years old have heard of HIV/AIDS.
- Of girls ages 15-19 who have heard of HIV/AIDS, more than four out of five know someone who has or has died of the virus, and more than three out of four know that a person with HIV/AIDS can look healthy.
- Twenty-one percent of girls 15-19 years old perceive themselves to be at moderate or high risk of contracting HIV/AIDS, yet only 2% of sexually active girls in this age group are using condoms as their primary contraceptive method.

**Table 13. Experience with Sexually Transmitted Diseases**

- Nine out of ten girls 15-19 years old have heard of any STD.
- Very few girls ages 15-19 (2%) report having had an STD in the last 12 months.

**Table 1**  
**Urban-Rural Residence and Population Distribution**

	Percent Distribution			Percent of Total Population
	Urban <sup>a</sup>	Rural <sup>a</sup>	Total	
<b>Girls</b>				
10-14	12.7	87.3	100.0	7.0
15-19	16.6	83.4	100.0	4.8
<b>Boys</b>				
10-14	9.4	90.6	100.0	7.0
15-19	13.2	86.8	100.0	4.4

<sup>a</sup> Refer to the DHS report cited in the Technical Notes for the definitions used for urban and rural areas.

**Guide to reading the table:**

- In the first column of percentages (under “Urban”), read the first number as the percentage of girls 10-14 years old who live in urban areas.
- In the fourth column of percentages (under “Percent of Total Population”), read the first number as the percentage of the total population who are girls 10-14 years old.

**Table 2**  
**Parental Survival Status and Residence in Household**  
**(Percent Distribution)**

Parental Survival Status					
	Both Parents Alive	Father Alive, Mother Dead	Mother Alive, Father Dead	Neither Parent Alive	Total
<b>Girls</b>					
10-14	77.2	4.6	14.1	4.1	100.0
15-19	X	X	X	X	X
<b>Boys</b>					
10-14	76.8	5.9	13.6	3.6	100.0
15-19	X	X	X	X	X
Parents Resident in Household <sup>a</sup>					
	Both Parents in Household	Father Only in Household	Mother Only in Household	Neither Parent in Household	Total
<b>Girls</b>					
10-14	44.0	7.2	17.5	31.3	100.0
15-19	X	X	X	X	X
<b>Boys</b>					
10-14	43.5	11.4	16.9	28.1	100.0
15-19	X	X	X	X	X

<sup>a</sup> An adolescent is defined as not living with a parent if the parent is deceased or does not live in the household in which the adolescent resides.

**Guide to reading the table:**

- In the first column of percentages in the upper panel (under “Both Parents Alive”), read the first number as the percentage of girls 10-14 years old whose parents are living.
- In the first column of percentages in the lower panel (under “Both Parents in Household”), read the first number as the percentage of girls 10-14 years old who live in households where both parents reside.

**Table 3**  
**Characteristics of Head of Household<sup>a</sup>**  
**(Percent)**

	<b>Female Household Head</b>	<b>Non-Parent Household Head</b>
<b>Girls</b>		
10-14	27.6	35.4
15-19	23.7	X
<b>Boys</b>		
10-14	26.9	32.5
15-19	24.1	X

<sup>a</sup> The head of each household was identified by the member of that household responding to the household survey.

**Guide to reading the table:**

- In the first column of percentages (under “Female Household Head”), read the first number as the percentage of girls 10-14 years old who live in households with a female head.
- In the second column of percentages (under “Non-Parent Household Head”), read the first number as the percentage of girls 10-14 years old who live in households with someone other than their mother or father as head.

**Table 4**  
**Educational Enrollment and Attainment**

		Current Enrollment (Percent Distribution)				
		Not in School	In Primary <sup>a</sup>	In Secondary <sup>b</sup>	In Higher	Total
<b>Girls</b>						
	10-14	26.8	71.2	1.9	0.0	100.0
	15-19	77.8	11.9	10.3	0.0	100.0
<b>Boys</b>						
	10-14	19.9	78.3	1.7	0.0	100.0
	15-19	49.3	34.4	16.2	0.1	100.0
		Educational Attainment (Percent)				
		Completed 4+ Years				Completed Primary School
<b>Girls</b>						
	15-19		60.5			24.5 <sup>d</sup>
	20-24		59.3			27.4
	25-29		52.6			26.6
<b>Girls 15-29</b>						
	Poorest 40% <sup>c</sup>		43.0			12.7
	Middle 40%		56.5			20.2
	Richest 20%		85.0			58.2
<b>Boys</b>						
	15-19		70.4			26.2 <sup>d</sup>
	20-24		76.3			42.5
	25-29		76.5			45.0
<b>Boys 15-29</b>						
	Poorest 40% <sup>c</sup>		65.8			24.0
	Middle 40%		73.0			32.5
	Richest 20%		90.1			65.9

<sup>a</sup> Primary school in Uganda consists of seven grades.

<sup>b</sup> Secondary school in Uganda consists of six grades.

<sup>c</sup> For an explanation of these categories, refer to the Technical Notes at the beginning of this document.

<sup>d</sup> Because some 15-19-year-olds may still be attending primary school, caution should be used when comparing primary school completion rates of 15-19-year-olds to completion rates in older age groups or across countries.

**Guide to reading the table:**

- In the first column of percentages in the upper panel (under “Not in School”), read the first number as the percentage of girls 10-14 years old who are not currently enrolled in school.
- In the first column of percentages in the lower panel, read the fourth number (opposite “Poorest 40%”) as the percentage of girls 15-29 years old in the poorest 40% of households who have completed four or more years of formal education.

**Table 5**  
**Educational Enrollment and Attainment in Urban Areas<sup>a</sup>**

<b>Current Enrollment (Percent Distribution)</b>						
	<b>Not in School</b>	<b>In Primary<sup>b</sup></b>	<b>In Secondary<sup>c</sup></b>	<b>In Higher</b>	<b>Total</b>	
<b>Girls</b>						
10-14	25.5	69.0	5.2	0.3	100.0	
15-19	68.4	7.3	24.3	0.0	100.0	
<b>Boys</b>						
10-14	18.9	76.5	4.6	0.0	100.0	
15-19	48.1	17.5	34.4	0.0	100.0	
<b>Educational Attainment (Percent)</b>						
	<b>Completed 4+ Years</b>		<b>Completed Primary School</b>			
<b>Girls</b>						
15-19	83.2		51.9 <sup>e</sup>			
20-24	84.6		59.5			
25-29	82.9		62.4			
<b>Girls 15-29</b>						
Poorest 40% <sup>d</sup>	56.8		24.3			
Middle 40%	74.8		34.2			
Richest 20%	88.4		65.8			
<b>Boys</b>						
15-19	83.6		54.2 <sup>e</sup>			
20-24	92.0		70.5			
25-29	92.8		74.0			
<b>Boys 15-29</b>						
Poorest 40% <sup>d</sup>	73.6		38.2			
Middle 40%	83.5		48.1			
Richest 20%	93.1		74.2			

<sup>a</sup> Refer to the DHS report cited in the Technical Notes for the definitions used for urban and rural areas.

<sup>b</sup> Primary school in Uganda consists of seven grades.

<sup>c</sup> Secondary school in Uganda consists of six grades.

<sup>d</sup> For an explanation of these categories, refer to the Technical Notes at the beginning of this document.

<sup>e</sup> Because some 15-19-year-olds may still be attending primary school, caution should be used when comparing primary school completion rates of 15-19-year-olds to completion rates in older age groups or across countries.

**Guide to reading the table:**

- In the first column of percentages in the upper panel (under “Not in School”), read the first number as the percentage of girls 10-14 years old living in urban areas who are not currently enrolled in school.
- In the first column of percentages in the lower panel, read the fourth number (opposite “Poorest 40%”) as the percentage of girls 15-29 years old in the poorest 40% of households and living in urban areas who have completed four or more years of formal education.

**Table 6**  
**Educational Enrollment and Attainment in Rural Areas<sup>a</sup>**

<b>Current Enrollment (Percent Distribution)</b>						
	<b>Not in School</b>	<b>In Primary<sup>b</sup></b>	<b>In Secondary<sup>c</sup></b>	<b>In Higher</b>	<b>Total</b>	
<b>Girls</b>						
10-14	27.0	71.6	1.4	0.0	100.0	
15-19	79.6	12.8	7.6	0.0	100.0	
<b>Boys</b>						
10-14	20.1	78.5	1.4	0.0	100.0	
15-19	49.5	37.0	13.5	0.1	100.0	
<b>Educational Attainment (Percent)</b>						
	<b>Completed 4+ Years</b>		<b>Completed Primary School</b>			
<b>Girls</b>						
15-19	56.0		19.1 <sup>e</sup>			
20-24	54.3		21.1			
25-29	46.5		19.2			
<b>Girls 15-29</b>						
Poorest 40% <sup>d</sup>	42.4		12.2			
Middle 40%	55.3		19.3			
Richest 20%	80.9		49.0			
<b>Boys</b>						
15-19	68.4		21.9 <sup>e</sup>			
20-24	73.0		36.6			
25-29	73.1		38.9			
<b>Boys 15-29</b>						
Poorest 40% <sup>d</sup>	65.4		23.3			
Middle 40%	72.2		31.5			
Richest 20%	87.1		57.5			

<sup>a</sup> Refer to the DHS report cited in the Technical Notes for the definitions used for urban and rural areas.

<sup>b</sup> Primary school in Uganda consists of seven grades.

<sup>c</sup> Secondary school in Uganda consists of six grades.

<sup>d</sup> For an explanation of these categories, refer to the Technical Notes at the beginning of this document.

<sup>e</sup> Because some 15-19-year-olds may still be attending primary school, caution should be used when comparing primary school completion rates of 15-19-year-olds to completion rates in older age groups or across countries.

**Guide to reading the table:**

- In the first column of percentages in the upper panel (under “Not in School”), read the first number as the percentage of girls 10-14 years old living in rural areas who are not currently in school.
- In the first column of percentages in the lower panel, read the fourth number (opposite “Poorest 40%”) as the percentage of girls 15-29 years old in the poorest 40% of households and living in rural areas who have completed four or more years of formal education.

**Table 7**  
**Educational Enrollment in Urban and Rural Areas<sup>a</sup>: Comparison Summary**

	Current Enrollment (Percent)			
	Not in School		In Primary <sup>b</sup>	
	Urban	Rural	Urban	Rural
<b>Girls</b>				
10-14	25.5	27.0	69.0	71.6
15-19	68.4	79.6	7.3	12.8
<b>Boys</b>				
10-14	18.9	20.1	76.5	78.5
15-19	48.1	49.5	17.5	37.0
	In Secondary <sup>c</sup>		In Higher	
	Urban	Rural	Urban	Rural
	<b>Girls</b>			
10-14	5.2	1.4	0.3	0.0
15-19	24.3	7.6	0.0	0.0
<b>Boys</b>				
10-14	4.6	1.4	0.0	0.0
15-19	34.4	13.5	0.0	0.1

<sup>a</sup> Refer to the DHS report cited in the Technical Notes for the definitions used for urban and rural areas.

<sup>b</sup> Primary school in Uganda consists of seven grades.

<sup>c</sup> Secondary school in Uganda consists of six grades.

**Guide to reading the table:**

- In the first column of percentages in the upper panel (under “Not in School: Urban”), read the first number as the percentage of girls 10-14 years old living in urban areas who are not currently enrolled in school.
- In the second column of percentages in the upper panel (under “Not in School: Rural”), read the first number as the percentage of girls 10-14 years old living in rural areas who are not currently enrolled in school.

**Table 8**  
**Marital Status**  
**(Percent Distribution)**

	Never-Married	Currently Married or in Union <sup>a</sup>	Separated, Divorced, or Widowed	Total
<b>Girls</b>				
10-14	X	X	X	X
15-19	50.1	47.1 <sup>b</sup>	2.8	100.0
<b>Boys</b>				
10-14	X	X	X	X
15-19	X	X	X	X
	Married by Age 15 (Percent) <sup>c</sup>	Married by Age 18 (Percent) <sup>c</sup>	Married by Age 20 (Percent) <sup>c</sup>	Median Age at First Marriage (Years)
<b>Girls</b>				
20-24	15.1	54.1	74.7	17.7
25-29	18.0	52.9	72.2	17.8
<b>Boys</b>				
20-24	X	X	X	X
25-29	X	X	X	X

<sup>a</sup> "In union" refers to girls who are in unions of cohabitation.

<sup>b</sup> Of currently married girls 15-19 years old, 17.2% are in polygynous unions.

<sup>c</sup> Defined as the percentage of girls in each age group who were married or in union by their 15<sup>th</sup>, 18<sup>th</sup>, or 20<sup>th</sup> birthday, respectively.

**Guide to reading the table:**

- In the first column of percentages in the upper panel (under "Never-Married"), read the second number as the percentage of girls 15-19 years old who have never been married.
- In the first column of percentages in the lower panel (under "Married by Age 15"), read the second number as the percentage of girls 25-29 years old who were married by their 15<sup>th</sup> birthday.
- In the last column of percentages in the lower panel (under "Median Age at First Marriage"), read the second number as the age by which 50% of girls 25-29 years old were married.

**Table 9  
Sexuality and Childbearing  
(Percent)**

	Ever Had Sexual Intercourse			Sexually Active <sup>a</sup>			Of Sexually Active, the Percent Married
	Of Never-Married	Of Total	Median Age at 1 <sup>st</sup> Sex (Years)	Of Unmarried <sup>b</sup>	Of Married <sup>c</sup>	Of Total	
<b>Girls</b>							
10-14	X	X	X	X	X	X	X
15-19	23.3	61.5	N/A <sup>d</sup>	6.8	79.2	40.9	91.2
<b>Boys</b>							
10-14	X	X	X	X	X	X	X
15-19	X	X	X	X	X	X	X
	Ever Pregnant <sup>e</sup>			Ever Had Child			
	Of Never-Married	Of Ever-Married <sup>f</sup>	Of Total	Of Never-Married	Of Ever-Married <sup>f</sup>	Of Total	
<b>Girls</b>							
10-14	X	X	X	X	X	X	
15-19	8.3	77.7	42.9	6.6	61.8	34.1	

<sup>a</sup>“Sexually active” is defined as reporting having had sexual intercourse within the last 28 days.

<sup>b</sup>“Unmarried” refers to girls who are currently neither married nor in unions of cohabitation. It includes those who are separated, divorced, or widowed.

<sup>c</sup>“Married” refers to girls who are currently married or in unions of cohabitation.

<sup>d</sup>Omitted because less than 50% of girls in the age group first had sexual intercourse by age 15.

<sup>e</sup>The DHS collected information on past live births and current pregnancy status at the time of the interview. Information was not collected on miscarriages, stillbirths, or abortions, and hence is not included in the calculation of “ever pregnant.” This statistic, therefore, is likely to be an underestimate of the true percentage of girls who have ever been pregnant.

<sup>f</sup>“Ever-married” refers to girls who are currently married, in union, separated, divorced, or widowed.

**Guide to reading the table:**

- In the first column of percentages in the upper panel (under “Ever Had Sexual Intercourse: Of Never-Married”), read the second number as the percentage of girls 15-19 years old who have had sexual intercourse among those who have never been married.
- In the seventh column of percentages in the upper panel (under “Of Sexually Active, the Percent Married”), read the second number as the percentage of girls 15-19 years old who are married, among those who report having had sex within the last 28 days.
- In the first column of percentages in the lower panel (under “Ever Pregnant: Of Never-Married”), read the second number as the percentage of girls 15-19 years old who have ever been pregnant, among those who have never been married.

**Table 10**  
**Educational Enrollment and Work<sup>a</sup> Status<sup>b</sup>**  
**(Percent Distribution)**

	<b>Not in School, Not Working</b>	<b>In School Only</b>	<b>Working Only</b>	<b>In School and Working</b>	<b>Total</b>
<b>Unmarried<sup>c</sup>, Without Children</b>					
<b>Girls</b>					
10-14	X	X	X	X	X
15-19	24.8	32.4	31.2	11.7	100.0
<b>Unmarried<sup>c</sup>, With Children</b>					
<b>Girls</b>					
10-14	X	X	X	X	X
15-19	41.1	0.4	58.1	0.3	100.0
<b>Married<sup>d</sup>, Without Children</b>					
<b>Girls</b>					
10-14	X	X	X	X	X
15-19	49.5	2.0	48.1	0.3	100.0
<b>Married<sup>d</sup>, With Children</b>					
<b>Girls</b>					
10-14	X	X	X	X	X
15-19	45.9	0.4	53.6	0.0	100.0

<sup>a</sup> Work is defined as both formal and informal, and excludes housework. It includes activities that are paid in cash or in kind, as well as work for a family farm or business.

<sup>b</sup> Information on work and parental status was not collected for boys.

<sup>c</sup> "Unmarried" refers to girls who are currently neither married nor in unions of cohabitation. It includes those who are separated, divorced, or widowed.

<sup>d</sup> "Married" refers to girls who are currently married or in unions of cohabitation.

**Guide to reading the table:**

- In the first column of percentages in the upper panel (under "Unmarried, Without Children: Not in School, Not Working"), read the second number as the percentage of unmarried girls 15-19 years old, without children, who are neither in school nor working.

**Table 11**  
**Awareness and Use of Modern Contraceptive Methods**  
**(Percent)**

	<b>Heard of a Modern Method of Contraception<sup>a</sup></b>	<b>Ever Used a Modern Method</b>	<b>Of Sexually Active<sup>b</sup>, Currently Using a Modern Method</b>
	<b>Never-Married</b>		
<b>Girls</b>			
10-14	X	X	X
15-19	78.4	5.7	22.4
<b>Boys</b>			
10-14	X	X	X
15-19	X	X	X
	<b>Ever-Married<sup>c</sup></b>		
<b>Girls</b>			
10-14	X	X	X
15-19	91.6	8.6	4.8
<b>Boys</b>			
10-14	X	X	X
15-19	X	X	X

<sup>a</sup> "Modern methods" of contraception include the oral contraceptive pill, intrauterine device, injections, diaphragm/foam/jelly, condom, female sterilization, male sterilization, and implants, including Norplant<sup>®</sup>.

<sup>b</sup> "Sexually active" is defined as reporting having had sexual intercourse within the last 28 days.

<sup>c</sup> The term "ever-married" includes girls who are currently married, in union, separated, divorced, or widowed.

**Guide to reading the table:**

- In the first column of percentages (under "Heard of a Modern Method of Contraception: Never-Married"), read the second number as the percentage of girls 15-19 years old who have heard of a modern method of contraception, among those who have never been married.
- In the third column of percentages (under "Of Sexually Active, Currently Using a Modern Method: Never-Married"), read the second number as the percentage of never-married girls 15-19 years old who currently use a modern method of contraception, among those who report having had sexual intercourse within the last 28 days.

**Table 12**  
**Awareness of HIV/AIDS**  
**(Percent)**

	Heard of HIV/AIDS			Know Someone Who Has or Has Died of HIV/AIDS <sup>b</sup>
	Of Never-Married	Of Ever-Married <sup>a</sup>	Of Total	
<b>Girls</b>				
10-14	X	X	X	X
15-19	98.6	98.8	98.7	85.6
<b>Boys</b>				
10-14	X	X	X	X
15-19	X	X	X	X
	Know a Healthy-Looking Person Can Have HIV/AIDS <sup>b</sup>	Perceive Themselves to Be at Moderate or Great Risk of HIV/AIDS <sup>b,c</sup>	Of Sexually Active <sup>d</sup> , Use Condom <sup>e</sup>	
<b>Girls</b>				
10-14	X	X	X	X
15-19	78.5	21.0	2.2	2.2
<b>Boys</b>				
10-14	X	X	X	X
15-19	X	X	X	X

<sup>a</sup> “Ever-married” refers to girls who are currently married, in union, separated, divorced, or widowed.

<sup>b</sup> These calculations exclude those who have not heard of HIV/AIDS.

<sup>c</sup> Respondents were asked whether they think their risk of getting AIDS is small, moderate, great, or whether they have no risk at all. Respondents could also volunteer the information that they were infected with HIV. These latter respondents were excluded from the calculation.

<sup>d</sup> “Sexually active” is defined as reporting having had sexual intercourse within the last 28 days.

<sup>e</sup> “Use condom” refers to those who report condoms as their primary current contraceptive method. This statistic may be an undercount, since information on multiple method use was not collected.

**Guide to reading the table:**

- In the first column of percentages in the upper panel (under “Heard of HIV/AIDS: Of Never-Married”), read the second number as the percentage of girls 15-19 years old who have heard of HIV/AIDS among those who have never been married.
- In the fourth column of percentages in the upper panel (under “Know Someone Who Has or Has Died of HIV/AIDS”), read the second number as the percentage of girls 15-19 years old who know someone who has or has died of HIV/AIDS, among those who have heard of HIV/AIDS.
- In the third column of percentages in the lower panel (under “Of Sexually Active, Use Condom”), read the second number as the percentage of girls 15-19 years old who report condom use as their primary current contraceptive method, among those who report having had sexual intercourse within the last 28 days.

**Table 13**  
**Experience with Sexually Transmitted Diseases (STDs)**  
**(Percent)**

	Heard of an STD <sup>a</sup>	Have Had an STD in Last 12 Months	Sought Advice During Last Episode of an STD <sup>b</sup>
<b>Girls</b>			
10-14	X	X	X
15-19	90.5	2.1	78.3 <sup>c</sup>
<b>Boys</b>			
10-14	X	X	X
15-19	X	X	X

<sup>a</sup> STDs include syphilis, gonorrhea, genital warts, AIDS, or any other of which the respondent is aware.

<sup>b</sup> Calculated among those who report having had an STD in the last 12 months.

<sup>c</sup> Based on fewer than 30 unweighted cases.

**Guide to reading the table:**

- In the first column of percentages (under “Heard of an STD”), read the second number as the percentage of girls 15-19 years old who have heard of any STDs.
- In the second column of percentages (under “Have Had an STD in Last 12 Months”), read the second number as the percentage of girls ages 15-19 who report having had an STD in the last 12 months.
- In the third column of percentages (under “Sought Advice During Last Episode of an STD”), read the second number as the percentage of girls 15-19 years old who sought advice during their last STD episode, among those who report having had an STD in the last 12 months.

**Table 14  
Female Genital Circumcision  
(Percent)**

	<b>Circumcised</b>	<b>Median Age at Circumcision (Years)</b>	<b>Have Circumcised / Will Circumcise Eldest Daughter</b>
		<b>Never-Married</b>	
<b>Girls</b>			
10-14			
15-19		<b>Data not collected for Uganda</b>	
20-24			
		<b>Ever-Married</b>	
<b>Girls</b>			
10-14			
15-19		<b>Data not collected for Uganda</b>	
20-24			